



ADVANCED WEAPON SYSTEMS FOR DEFENSE

At SIG SAUER® our mission is to provide elite end users with the complete weapons system they need to prevail under any circumstance. By combining industry-leading product innovation, with decades of battle-tested experience, we have engineered the world’s toughest, most accurate, most precise, and most dependable, pistols, rifles, electro-optics, suppressors, and ammunition available. Designed and built in the U.S.A. and ready to perform whenever and wherever the need arises.



SIG SAUER®

SIG SAUER®, Inc. • 72 Pease Boulevard • Newington, NH 03801 USA • +1 (603) 610-3000

An ISO 9001:2015 Registered Company. Manufacturing in the U.S.A.

All trademarks, service marks, trade names, trade dress, product names and logos appearing in this catalog are the property of their respective owners.
No trademark or service mark appearing in this catalog may be used without the prior written consent of the owner.

CONTENTS

PISTOLS	
P320-M17E/M18E	2
MHX KIT	3
P320	4
P320PRO SERIES	5
P320 RX	6
P320 MODULAR HANDGUN	7
P320 ECOSYSTEM	8
PISTOL ACCESSORIES	9
P365	10
P365XL	11
P365 RXZE	12
P365 XMACRO	13
P226	14
P229	15
SP2022	16
UTM /SIMS	17
RIFLES	
SIG MCX LIGHTWEIGHT	18
SIG MCX RATTLER	21
SIG MCX MODULAR RIFLE PLATFORM	22
SIG MCX ACCESSORIES	23
SIG MCX SPEAR	24
SIG XM250	26
SIG LMG	27
SIG MMG	28
REMOTE WEAPON SYSTEM	29
SIG MPX	30
SIG MPX RIFLE PLATFORM	31
516	32
716i	33
CROSS STX	34
SIGM400 PRO	35
RIFLE ACCESSORIES	36
UTM RIFLE CONVERSION	37

ELECTRO-OPTICS	
TANGO-DMR	38
TANGO6	39
WHAT IS BDX	40
SIERRA3BDX	41
KILO BDX	42
ROMEO2	43
ROMEO4T-PRO	44
ROMEO1PRO	45
ROMEO-M17	46
ROMEOZERO	47
FOXTROT	48

ELECTRO-OPTICS	
ROMEO8T	49
ROMEO9T	50
JULIET	51
ALPHA MOUNTS	52
AMMUNITION	
SIG FURY HYBRID	53
RIFLE	54
PISTOL	56
SUPPRESSORS	
MOD-X PISTOL	57
SLX RIFLE	58
SLH RIFLE	59
TRAINING WEAPONS	
PROFORCE	60
TRAINING	
SIG SAUER ACADEMY	61

M17E/M18E

THE CHOSEN ONE

Selected as the official sidearm of all branches of the U.S. Military for its uniquely innovative modularity, uncompromising performance, and unmatched capability - the M17/M18 redefined the definition of the combat handgun forever.



Shown with optional ROMEO2™ Red Dot sight

M17 E

- ▲ Coyote Full-Size Slide/Carry Grip
- ▲ Night Sight Rear Plate w/SIGLITE® Front
- ▲ 119 mm / 4.7" Barrel
- ▲ 17 Round Magazine (Optional 21 Round Magazine)
- ▲ Loaded Chamber Indicator
- ▲ Manual Safety
- ▲ Black Controls

Available in Black

9mm



M18 E

- ▲ Coyote Compact Slide/Carry Grip
- ▲ Night Sight Rear Plate w/Siglite® Front
- ▲ 99 mm / 3.9" Barrel
- ▲ 17 Round Magazine (Optional 21 Round Magazine)
- ▲ Loaded Chamber Indicator
- ▲ Manual Safety
- ▲ Black Controls

Available in Black

9mm



CALIBER
9 MM

SPECIFICATIONS	M17E	M18E
OVERALL LENGTH	203 mm / 8.0"	182 mm / 7.2"
OVERALL HEIGHT	139 mm / 5.5"	139 mm / 5.5"
OVERALL WIDTH	40.6 mm / 1.6"	40.6 mm / 1.6"
BARREL LENGTH	119 mm / 4.7"	99 mm / 3.9"
SIGHT RADIUS	167 mm / 6.6"	147 mm / 5.8"
WEIGHT (WITH MAG)	.83kg / 29.5 oz	.765 kg / 27.0 oz
MAG CAPACITY	17 / 21 RDS	17 / 21 RDS

MHX KIT

EXCLUSIVELY FOR M17/M18 PISTOLS

The M17 and M18 were selected as the official sidearm of all branches of the U.S. Military. With the unique modularity of these platforms SIG offers advancements to the side arms with add on features to keep the soldier equipped and prepared for the ever changing battlefield. The M17/M18 truly redefined the definition of the modular combat handgun forever.



Shown with optional ROMEO17 Red Dot sight.

M17 E

- ▲ Coyote Full-Size Slide/Carry Grip
- ▲ Night Sight Rear Plate w/SIGLITE® Front
- ▲ 119 mm/4.7" Barrel
- ▲ 17 Round Magazine (Optional 21 Round Magazine)
- ▲ Loaded Chamber Indicator
- ▲ Manual Safety
- ▲ Black Controls

Available in Black



Shown with optional ROMEO2 Red Dot sight.

M18 MHX

- ▲ Coyote Compact Slide/Carry Grip
- ▲ Night Sight Rear Plate w/Siglite® Front
- ▲ 17 Round Magazine (Optional 21 Round Magazine)
- ▲ Loaded Chamber Indicator
- ▲ Manual Safety
- ▲ Black Controls

Available in Black



CALIBER 9 MM

SPECIFICATIONS	M17E	M18E
OVERALL LENGTH	203 mm / 8.0"	182 mm / 7.2"
OVERALL HEIGHT	139 mm / 5.5"	139 mm / 5.5"
OVERALL WIDTH	40.6 mm / 1.6"	40.6 mm / 1.6"
BARREL LENGTH	119 mm / 4.7"	99 mm / 3.9"
SIGHT RADIUS	167 mm / 6.6"	147 mm / 5.8"
WEIGHT (WITH MAG)	.83kg / 29.5 oz	.765 kg / 27.0 oz
MAG CAPACITY	17 / 21 RDS	17 / 21 RDS

P320®

WORLDS MOST INNOVATIVE HANDGUN

The state-of-the-art SIG SAUER® P320 quickly became one of the most sought after pistols on the market today. With unprecedented modularity, and unmatched capabilities, the P320 is the choice of the military and law enforcement across the globe.



9mm

P320 FULL SIZE

- ▲ Full-Size Grip / Full Length Slide
- ▲ X-RAY3 Day/Night Sights, SIGLITE® Night Sights or Contrast Sights Available
- ▲ 119 mm /4.7" Barrel
- ▲ 17 Round Magazine (Optional 21 Round Magazine)
- ▲ Modular Striker-Fired Pistol



CALIBER
9 MM



9mm

P320 CARRY

- ▲ Carry Grip Module / Compact Length Slide
- ▲ SIGLITE Night Sights or Contrast Sights Available
- ▲ 3.9" Barrel
- ▲ 17 Round Magazine (Optional 21 Round Magazine)
- ▲ Modular Striker-Fired Pistol



9mm

P320 COMPACT MS

- ▲ Compact Grip Module / Compact Length Slide
- ▲ X-RAY3 Day/Night Sights, SIGLITE Night Sights or Contrast Sights Available
- ▲ 3.9" Barrel
- ▲ 15 Round Magazine
- ▲ Manual Safety
- ▲ Modular Striker-Fired Pistol



9mm

P320 COMPACT

- ▲ Compact Grip Module / Compact Length Slide
- ▲ X-RAY3 Day/Night Sights, SIGLITE Night Sights or Contrast Sights Available
- ▲ 3.9" Barrel
- ▲ 15 Round Magazine
- ▲ Modular Striker-Fired Pistol

SPECIFICATIONS	COMPACT	COMPACT MS	CARRY	FULL SIZE
OVERALL LENGTH	183 mm / 7.2"	183 mm / 7.2"	183 mm / 7.2"	203 mm / 8.0"
OVERALL HEIGHT	134 mm / 5.3"	134 mm / 5.3"	140 mm / 5.5"	140 mm / 5.5"
OVERALL WIDTH	33.0 mm / 1.3"	40.6 mm / 1.6"	33.0 mm / 1.3"	33.0 mm / 1.3"
BARREL LENGTH	91 mm / 3.6"	99 mm / 3.9"	99 mm / 3.9"	119 mm / 4.7"
SIGHT RADIUS	147 mm / 5.8"	147 mm / 5.8"	147 mm / 5.8"	167 mm / 6.6"
WEIGHT (WITH MAG)	0.73 kg / 25.8 oz	0.73 kg / 25.8 oz	0.75 kg / 26.5 oz	0.84 kg / 29.5 oz
MAG CAPACITY	15 RDS	17 RDS	17 RDS	17 RDS

P320[®] PRO SERIES

THE STANDARD OF PERFORMANCE

XSERIES PRO models include the pro series optic-ready slide with dovetail sights which allows for co-witnessing with red dot optics, as well as enhanced XSERIES grip module with extended beavertail, 4-sided beveled magwell, and a deep trigger guard undercut. The flat trigger and optic-ready slide make the P320X stand above the rest.



9mm

P320 XCOMPACT PRO

- ▲ XCOMPACT Grip Module / Sub-Compact Length Slide
- ▲ Dovetail Sight and Optic Cover Plate w/X-RAY3[®] Front
- ▲ 91 mm / 3.6" Barrel
- ▲ 15 Round Magazine
- ▲ Optional Curved Trigger



Optional Aluminum Flared Magwell
(Not compatible with XCOMPACT grip module)



CALIBER
9 MM



9mm

P320 XCARRY PRO

- ▲ XCOMPACT Grip Module / Sub-Compact Length Slide
- ▲ Dovetail Sight and Optic Cover Plate w/X-RAY3 Front
- ▲ 99 mm / 3.9"
- ▲ Optional Magwell and Grip Weight Available
- ▲ 17 Round Magazine (Optional 21 Round Magazine)
- ▲ Optional Curved Trigger



9mm

P320 XFULL PRO

- ▲ XCARRY Grip Module / Compact Length Slide
- ▲ Dovetail Sight and Optic Cover Plate w/X-RAY3 Front
- ▲ 119 mm / 4.7"
- ▲ Optional Magwell and Grip Weight Available
- ▲ 17 Round Magazine (Optional 21 Round Magazine)
- ▲ Optional Curved Trigger



9mm

P320 XFULL LDC PRO

- ▲ FULL SIZE Grip Module / Full Length Slide
- ▲ Dovetail Sight and Optic Cover Plate w/X-RAY3 Front
- ▲ 119 mm / 4.7"
- ▲ Optional Magwell and Grip Weight Available
- ▲ 17 Round Magazine (Optional 21 Round Magazine)
- ▲ Optional Curved Trigger

SPECIFICATIONS	X COMPACT	XCARRY	XFULL	XFULL LDC
OVERALL LENGTH	178 mm / 7.0"	188 mm / 7.4"	208 mm / 8.2"	208 mm / 8.0"
OVERALL HEIGHT	134 mm / 5.3"	140 mm / 5.5"	140 mm / 5.5"	140 mm / 5.5"
OVERALL WIDTH	33.0 mm / 1.3"	33.0 mm / 1.3"	33.0 mm / 1.3"	33.0 mm / 1.3"
BARREL LENGTH	91 mm / 3.6"	99 mm / 3.9"	119 mm / 4.7"	119 mm / 4.7"
SIGHT RADIUS	140 mm / 5.5"	147 mm / 5.8"	167 mm / 6.6"	167 mm / 6.6"
WEIGHT (WITH MAG)	0.72 kg / 25.3 oz	0.76 kg / 27.0 oz	0.84 kg / 29.5 oz	0.84 kg / 29.5 oz
MAG CAPACITY	15 RDS	17 RDS	17 RDS	17 RDS

P320[®] RX

JOIN THE RED DOT REVOLUTION

The new P320 RX series is the next generation of pistol and optics solutions from SIG SAUER[®]. The RX series combines the latest advancements in reflex optics, with the world's most innovative handgun. Featuring the new ROMEO1PRO[™] and the ROMEO2[™] red dot optics, each of the RX series pistols delivers a new level of durability and performance. Available on both the standard and XSERIES P320 pistols, the RX series are zeroed and ready to shoot, right out of the box allowing users to easily achieve a whole new level of accuracy and performance.



P320 XFULL RX

- ▲ XCARRY Grip module / Full Length Slide
- ▲ X-RAY3 Day/Night Sights
- ▲ ROMEO2 Optic Installed
- ▲ 119 mm / 4.7" Barrel
- ▲ 17 Round Magazine (Optional 21 Round Magazine)
- ▲ Optional Magwell and Grip Weight Available
- ▲ Optional Curved Trigger



Threaded Barrel Available
Removable Protective Cap Included



CALIBER
9 MM



P320 XCOMPACT RX

- ▲ XCOMPACT Grip Module / Sub-Compact Length Slide
- ▲ X-RAY3 Day/Night Sights
- ▲ ROMEO1PRO Optic Installed
- ▲ 91 mm / 3.6" Barrel
- ▲ 15 Round Magazine
- ▲ Optional Curved Trigger



P320 XCARRY RX

- ▲ XCARRY Grip Module / Compact Length Slide
- ▲ X-RAY3[™] Day/Night Sights
- ▲ ROMEO2 Optic Installed
- ▲ 99 mm / 3.9" Barrel
- ▲ 17 Round Magazine (Optional 21 Round Magazine)
- ▲ Optional Curved Trigger



P320 FULL RX

- ▲ FULL SIZE Grip Module / Full Length Slide
- ▲ X-RAY3[™] Day/Night Sights
- ▲ ROMEO1PRO Optic Installed
- ▲ 119 mm / 4.7" Barrel
- ▲ 17 Round Magazine (Optional 21 Round Magazine)

SPECIFICATIONS	X COMPACT	XCARRY	XFULL	FULL
OVERALL LENGTH	178 mm / 7.0"	188 mm / 7.4"	208 mm / 8.2"	208 mm / 8.0"
OVERALL HEIGHT	134 mm / 5.3"	140 mm / 5.5"	140 mm / 5.5"	140 mm / 5.5"
OVERALL WIDTH	33.0 mm / 1.3"	33.0 mm / 1.3"	33.0 mm / 1.3"	33.0 mm / 1.3"
BARREL LENGTH	91 mm / 3.6"	99 mm / 3.9"	119 mm / 4.7"	119 mm / 4.7"
SIGHT RADIUS	140 mm / 5.5"	147 mm / 5.8"	167 mm / 6.6"	167 mm / 6.6"
WEIGHT (WITH MAG)	0.72 kg / 25.3 oz	0.76 kg / 27.0 oz	0.84 kg / 29.5 oz	0.84 kg / 29.5 oz
MAG CAPACITY	15 RDS	17 RDS	17 RDS	17 RDS

P320[®]

THE MOST ADAPTABLE PISTOL EVER.

SERIALIZED, STAINLESS STEEL FRAME

Unique design gives you the freedom to change calibers, sizes, and fit – quickly and easily.



- 1. CALIBER:
9mm
- 2. CHANGE SIZE:
Full-Size / Carry / Compact
- 3. CHOOSE GRIP FIT:
Large / Medium / Small



Interchangeable grip modules provide optimal grip circumference without adding a bulky backstrap.

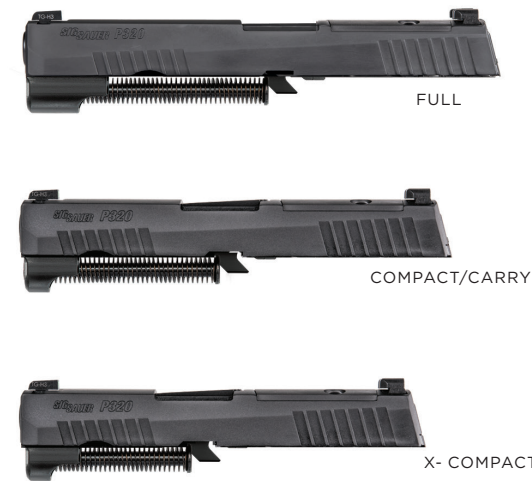
EXCEPTIONAL TRIGGER

A smooth, crisp trigger pull and short tactile reset deliver heightened accuracy.

SAFETY WITHOUT COMPROMISE

- Striker Safety
- Disconnect Safety
- 3-Point Takedown Safety
 1. Remove magazine
 2. Lock slide to rear
 3. Rotate take-down lever for disassembly without tools or trigger manipulation

THE STRIKER-FIRED STANDARD IN MODULARITY AND ADAPTABILITY.



SLIDE ASSEMBLY (SHOWN WITH OPTIC PLATE)



REMOVABLE OPTIC PLATE FOR RED DOT INSTALL

PARTS LIST

Serialized Stainless Steel Frame

SLIDE ASSEMBLIES

Full-Size
Compact/Carry

BARRELS

4.7" Full-Size
3.9" Compact/Carry
4.6" Compact Threaded
3.6" Subcompact/XCOMPACT

GRIP MODULES

STANDARD

Compact S/M/L
Carry S/M/L
Full-Size S/M/L

XSERIES

Compact S/M/L
Carry S/M/L
Full-Size S/M/L

MAGAZINES

Compact
Full-Size/Carry
Extended
21 Rounds



Available with Manual Safety



Available with Flat Trigger



FULL

COMPACT/CARRY



SERIALIZED STAINLESS STEEL FRAME

MAGAZINES



COMPACT
15 ROUNDS

CARRY / FULL
17 ROUNDS

EXTENDED
21 ROUNDS

EXTENDED
30 ROUNDS



GRIP MODULES

COMPACT

CARRY

FULL-SIZE

XCOMPACT

XCARRY

XFULL-SIZE

Grip Modules Available in Coyote

SPECIFICATIONS	FULL SIZE	CARRY	COMPACT
OVERALL LENGTH	205 mm / 8.1"	183 mm / 7.2"	183 mm / 7.2"
OVERALL HEIGHT	140 mm / 5.5"	140 mm / 5.5"	135 mm / 5.3"
BARREL LENGTH	119 mm / 4.7"	99 mm / 3.9"	99 mm / 3.9"
SIGHT RADIUS	168 mm / 6.6"	147 mm / 5.8"	147 mm / 5.8"
WEIGHT WITH MAGAZINE	0.84 kg / 29.5 oz	0.75 kg / 26.5 oz	0.73 kg / 25.8 oz

P320[®]

ECOSYSTEM



MAGAZINES AVAILABLE IN FDE

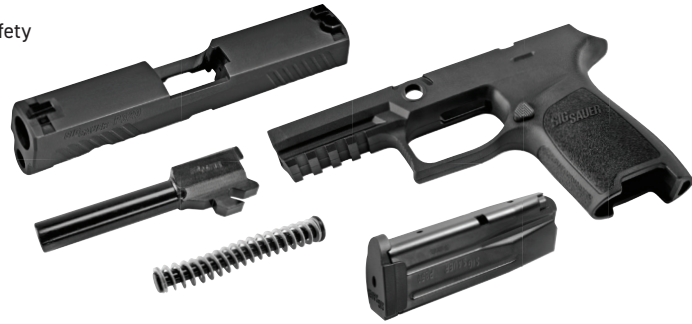
PISTOL

ACCESSORIES

P320 X-CHANGE KITS

The modular pistol has arrived. Removing P320 fire control group unlocks hundreds of combinations.

- ▲ Includes: Complete Slide, Barrel, Recoil Spring Assembly, Grip Module, and Magazine
- ▲ Reflex Optic Compatible
- ▲ Not Available for Manual Safety



P320 TXG™ GRIP MODULE

The weight of steel and the flex of polymer

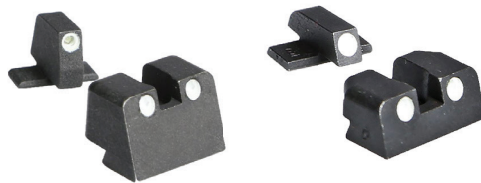
- ▲ Requires Complete P320 Fire Control Unit and XFIVE or Full-Size Slide Assembly
- ▲ Overall Weight is 16.6oz
- ▲ Tungsten-Infused Polymer
- ▲ Available with Extended Magwell and Internal Weight
- ▲ Patent Pending Technology



SIG PISTOL SIGHTS

Factory replacement pistol sights for all P-Series pistol slides with machined dovetail notch.

- ▲ Suppressor height sights
- ▲ SIGLITE Night Sights
- ▲ Contrast Sights



P320 GRIP MODULES

Engineered to fit your hand and your P320.

- ▲ Full-Size, Carry, Compact, and Sub-Compact
- ▲ XFIVE; XFULL, XCARRY, XCOMPACT
- ▲ Black, M17 Coyote, and White
- ▲ Large, Medium, and Small (Not Available in All Colors and XSERIES)
- ▲ XFIVE Grip Module Includes Weight and Magazine Funnel



P320 STIPPLED GRIP

These grips put the "tac" in tactical. Hand stippled by craftsmen in the U.S.A. for those that want more gripping power.

- ▲ Carry-Size XSERIES Grip
- ▲ Black Finish
- ▲ Compatible with Grip Weights and Magazine Funnels



SIG PISTOL MAGAZINES

Original factory magazines designed specifically for SIG SAUER® pistols.

- ▲ Capacities from 6 to 21 Rounds
- ▲ 9mm, .357 SIG, .40 S&W, 10mm, and .45 ACP



SIG PISTOL BARRELS

SIG SAUER factory made pistol barrels.

- ▲ Offered in P220, P226, P229, 1911, P320, and P365 Firearms Families
- ▲ Threaded and Non-Threaded Versions



SIG PISTOL TRIGGER UPGRADES

Introduce the next level in precision to Classic and P320 pistols.

- ▲ Made in Flat and Curved Trigger Configurations



SIG PISTOL PART KITS

Keep your favorite firearm running like new.

- ▲ Replacement Parts Kits for Classic, P320, and P365 Models
- ▲ Factory Approved Parts for Every Need



P365[®]

EVERYDAY CARRY WITH 10+1 FULL-SIZE CAPACITY

The game-changing P365. Micro-compact everyday carry size with unprecedented 10+1 full-size capacity. The P365 is striker-fired, with the clean crisp trigger pull you expect from a SIG. Lightweight and easy to conceal, the P365 is chambered in 9mm and is rated for +P ammunition. Included standard are XRAY3™ Day/Night sights, a 10-round flush fit magazine, and a 10-round extended magazine. An optional 12-round or 15-round extended magazine allows you to bring the total capacity to 13 or 16 rounds.



P365 NITRON[®]

- ▲ NITRON Stainless Steel Slide
- ▲ X-RAY3 Day/Night Sights
- ▲ 3.1" Barrel
- ▲ 10 Round Flush Fit Magazine (Optional 10, 12 or 17 Round Extended Magazine)
- ▲ Front Cocking Serrations

9mm



Available with Manual Safety



Available with Flat Trigger



CALIBER
9 MM



380 ACP

P365 380 NITRON[®]

- ▲ NITRON Stainless Optic-Ready Slide
- ▲ SIGLITE Night Sights
- ▲ 79 mm / 3.1" Barrel
- ▲ Shared FCU and Grip Module with P365 9mm
- ▲ Less Recoil and Reduced Racking Force
- ▲ Accessory Rail
- ▲ (2) 10rd Magazines (One Flush Fit and One Extended) and Mag Loader



P365 SMALL SIZE

The revolutionary new concealed carry pistol that gives you more capacity, more concealability, and more capability. It's the one gun you can carry 365 days of the year.



10+1 ROUND
FLUSH FIT

10+1 ROUND
EXTENDED

12 +1 ROUND
EXTENDED

17 ROUND
EXTENDED

SPECIFICATIONS

	P365	P365 380
OVERALL LENGTH	147 mm / 5.8"	147 mm / 5.8"
OVERALL HEIGHT	109 mm / 4.3"	107 mm / 4.2"
OVERALL WIDTH	25,4 mm / 1.0"	26 mm / 1.0"
BARREL LENGTH	79 mm / 3.1"	78 mm / 3.1"
SIGHT RADIUS	124 mm / 4.9"	124 mm / 4.9"
WEIGHT WITH MAGAZINE	0.50 kg /17.8 oz	0.445 kg / 15.7 oz
MAG CAPACITY	10+1 RDS (FLUSH FIT, EXT) 12+1 RDS (EXTENDED +)	10+1 RDS (FLUSH FIT) 10+1 RDS (EXTENDED)

P365XL

PERFECT BALANCE OF CONCEALMENT AND SHOOTABILITY

The P365® redefined what a concealed-carry pistol should be, now the P365XL does it again. The perfect balance of micro-compact concealability with full-size shootability the P365XL packs 12 + 1 or available 17 round + 1 capacity in a micro-compact, highly concealable size yet maintains the comfort and shootability of a full-size pistol.



P365XL MANUAL SAFETY

- ▲ NITRON Stainless Steel Slide
- ▲ Night Sight Rear Plate w/XRAY3 Front
- ▲ 94 mm / 3.7" Barrel
- ▲ 12 Round Steel Magazines (Optional 17 Round Extended Magazine)
- ▲ Ambidextrous Manual Safety
- ▲ Flat Trigger with a 90° Break

9mm



P365XL NITRON®

- ▲ P365 Grip Module with Integrated Carry Magwell and Extended Beavertail
- ▲ Optic Ready Slide Compatible with Romeo Zero and RMSc Optics
- ▲ Night Sight Rear Plate w/XRAY3® Front
- ▲ 94 mm / 3.7" Barrel for Increased Accuracy While Retaining Concealability.
- ▲ 12 Round Steel Magazines (Optional 17 Round Extended Magazine)
- ▲ Flat Trigger with a 90 Degree Break

9mm



17-ROUND MAGAZINE



CALIBER
9 MM



168 mm / 6.6"



122 mm
4.8"

28.0 mm
1.1"

SPECIFICATIONS	P365XL	P365XL MS
OVERALL LENGTH	168 mm / 6.6"	168 mm / 6.6"
OVERALL HEIGHT	122 mm / 4.8"	122 mm / 4.8"
OVERALL WIDTH	20 mm / 1.1"	20 mm / 1.1"
BARREL LENGTH	94 mm / 3.7"	94 mm / 3.7"
SIGHT RADIUS	142 mm / 5.6"	142 mm / 5.6"
WEIGHT (WITH MAG)	0.59 kg / 20.7 oz	0.59 kg / 20.7 oz
MAG CAPACITY	12 RDS	12 RDS

P365[®] RXZE

THE ULTIMATE IN CONCEALABILITY AND CAPABILITY. NOW WITH A ROMEOZERO.

The P365 redefined what a concealed-carry pistol should be. Now, the new P365 X, and XL ROMEOZERO is doing it again. The perfect balance of micro-compact concealability with full-size shootability, now with the ROMEOZero ELITE pre-installed. The P365 X, and XL ROMEOZERO packs 10 + 1 or available 12 + 1 capacity in a micro-compact, highly concealable size. The P365-380 offers all the same features as America’s #1 selling micro-compact pistol, now in the softer shooting 380 caliber resulting in easier handling and less felt recoil.



9mm

P365X RXZE

- ▲ NITRON[®] Stainless Steel Slide
- ▲ ROMEOZERO[®] Elite Optic Installed
- ▲ Suppressor Height XRay3 Day/Night Sights
- ▲ 79 mm / 3.1" Barrel
- ▲ (2) 12rd Steel Magazines
- ▲ Front Cocking Serrations



CALIBER
9 MM



CALIBER
.380



9mm

P365XL RXZE

- ▲ NITRON Stainless Steel Slide
- ▲ ROMEOZERO Elite Optic Installed
- ▲ Suppressor Height XRay3 Day/Night Sights
- ▲ 94 mm / 3.7" Barrel
- ▲ (2) 12rd Steel Magazines
- ▲ Front Cocking Serrations



380 ACP

P365 380 RXZE

- ▲ NITRON Stainless Steel Slide
- ▲ ROMEOZERO Elite Optic Installed
- ▲ SIGLITE[®] Suppressor Height Night Sights
- ▲ 7.9 mm / 3.1" Barrel
- ▲ (2) 10rd Steel Magazines
- ▲ Front Cocking Serrations



ROMEOZERO Elite Optic Installed
on all RXZ Models

SPECIFICATIONS	P365X RXZE	P365XL RXZE	P365 380 RXZE
OVERALL LENGTH	152 mm / 6.0"	168 mm / 6.6"	147 mm / 5.8"
OVERALL HEIGHT	140 mm / 5.5"	140 mm / 5.5"	132 mm / 5.2"
OVERALL WIDTH	29 mm / 1.1"	29 mm / 1.1"	25.4 mm / 1.0"
BARREL LENGTH	79 mm / 3.1"	94 mm / 3.7"	79 mm / 3.1"
SIGHT RADIUS	123 mm / 4.9"	142 mm / 5.6"	123 mm / 4.9"
WEIGHT (WITH MAG)	0.51 kg / 18 oz	0.58 kg / 20.7 oz	0.45 kg / 16 oz
MAG CAPACITY	12+1 RDS (2)	12+1 RDS (2)	10+1 RDS (2)

P365-XMACRO™

MACRO MEANS MORE.

The P365-XMACRO brings MORE of everything that made the P365 the #1 selling gun in America. With an innovative new magazine design the P365-XMACRO packs a full-size 17+1 round capacity into the thin, iconic profile of the P365. With its slim, 1" wide design the P365-XMACRO is more concealable and more comfortable to carry than any other 17 round gun on the market. **More capacity. More shootability. More concealability.** The P365-XMACRO. MACRO means MORE.



P365-XMACRO NITRON®

- ▲ All-New Macro-Compact Grip Module Featuring Standard 1913 Rail
- ▲ (2) 17rd Steel Magazines with High Visibility Followers
- ▲ Interchangeable Small, Medium, and Large Backstrap Included
- ▲ 3.1" BARREL
- ▲ XRAY3 Day/Night Sights
- ▲ Compatible with SIG SAUER ROME0Zero



17-round magazine



CALIBER
9 MM



P365X-MACRO ROMEOZERO ELITE

- ▲ All-New Macro-Compact Grip Module Featuring Standard 1913 Rail
- ▲ Stainless Slide with ROME0Zero Elite Installed
- ▲ (2) 17rd Steel Magazines with High Visibility Followers
- ▲ Interchangeable Small, Medium, and Large Backstrap Included
- ▲ 3.1" BARREL
- ▲ XRAY3 Day/Night Front Sight



Interchangeable Small, Medium, Large Backstrap and Loader Included

SPECIFICATIONS	P365-XMACRO	P365-XMACRO RXZE
OVERALL LENGTH	167.6 mm / 6.6"	167.6 mm / 6.6"
OVERALL HEIGHT	132 mm / 5.2"	132 mm / 5.2"
OVERALL WIDTH	27.9 mm / 1.1"	27.9 mm / 1.1"
BARREL LENGTH	78.7 mm / 3.1"	78.7 mm / 3.1"
SIGHT RADIUS	129.5 mm / 5.1"	129.5 mm / 5.1"
WEIGHT (WITH MAG)	0.60 kg / 21.5 oz	0.62 kg / 21.9 oz
MAG CAPACITY	17 RDS	17 RDS

P226[®]

PROVEN PERFORMANCE AND ACCURACY

The SIG SAUER P226 set the standard by which all other combat handguns are measured. The iconic P226 served alongside the U.S. Navy SEALs for decades and is in action around the globe. With legacy of accuracy and reliability, and millions upon millions of rounds of proven performance, it has earned its reputation as the premiere combat pistol.

LEGION SERIES



9mm

P226 LEGION BLACK SAO RXP

- ▲ NITRON[®] Stainless Steel Slide/Frame
- ▲ X-RAY3[™] Day/Night Sights
- ▲ 112 mm / 4.4" Barrel
- ▲ 15 Round Magazine
- ▲ Grayguns Inc. Designed P-SAIT Trigger
- ▲ 2-Piece G10 Grips
- ▲ Threaded Barrel Available
- ▲ Chrome Lined DLC Barrel
- ▲ Available without Red Dot Sight
- ▲ Available in DA/SA



CALIBER
9 MM



CALIBER
40 S&W



9mm

P226 BSE

- ▲ NITRON Stainless Steel Slide
- ▲ ROME0Zero Elite Optic Installed
- ▲ SIGLITE[®] Suppressor Height Night Sights
- ▲ 4.4" Barrel
- ▲ (2) 10rd Steel Magazines
- ▲ Front Cocking Serrations



9mm

MK-25

- ▲ Nitron Stainless Steel Slide
- ▲ SIGLITE[®] Night Sights or Contrast Sights Available
- ▲ 112 mm / 4.4" Barrel
- ▲ 5 Round Magazine
- ▲ Corrosion-Resistant Internal Coating
- ▲ Phosphate-Coated Chrome-Lined Barrel
- ▲ Anchor Engraving, UID Label



Shroud Included with RXP Models



Threaded Barrel Available
Removable Protective Cap Included

SPECIFICATIONS	LEGION BLACK	BSE	MK25
OVERALL LENGTH	203 mm / 8.0"	195 mm / 7.7"	195 mm / 7.7"
OVERALL HEIGHT	140 mm / 5.5"	140 mm / 5.5"	140 mm / 5.5"
OVERALL WIDTH	38 mm / 1.5"	38 mm / 1.5"	38 mm / 1.5"
BARREL LENGTH	112 mm / 4.4"	112 mm / 4.4"	112 mm / 4.4"
SIGHT RADIUS	160 mm / 6.3"	160 mm / 6.3"	160 mm / 6.3"
WEIGHT (WITH MAG)	.975 kg / 34.4 oz	.975 kg / 34.4 oz	.975 kg / 34.4 oz
MAG CAPACITY	15 RDS	15 RDS	15 RDS

P229[®]

STANDARD ISSUE

The SIG SAUER P229 incorporates all the features of the P226 in a smaller, more compact package. Originally designed to meet the needs of law enforcement, today's P229 was engineered to meet the most demanding reliability standards while delivering the highest possible performance.



9mm

P229 BSE

- ▲ NITRON[®] Stainless Steel Slide/Alloy Frame
- ▲ SRT Trigger
- ▲ SIGLITE[®] Night Sights
- ▲ 3.9" Barrel
- ▲ 15 Round Magazine
- ▲ One-Piece Ergonomic Grip
- ▲ Available in SAO Trigger



Threaded Barrel Available (9mm)
Removable Protective Cap Included



CALIBER
9 MM



CALIBER
40 S&W



9mm

M11-A1 NITRON

- ▲ NITRON Stainless Steel Slide / Alloy Frame
- ▲ SIGLITE Night Sights or Contrast Sights Available
- ▲ 99 mm / 3.9" Barrel
- ▲ 15 Round Magazine
- ▲ Two-Piece Grip Plates
- ▲ UID Label



9mm

P229 LEGION BLACK RX

- ▲ NITRON Stainless Steel Slide/Frame
- ▲ X-RAY3 Day/Night Sights w/ROME01PRO Installed
- ▲ 99 mm / 3.9" Barrel
- ▲ 15 Round Magazine
- ▲ Black G10 Checkered Grips
- ▲ Chrome Lined DLC Barrel
- ▲ Available in SAO



9mm

P229 LEGION BLACK

- ▲ NITRON[®] Stainless Steel Slide/Frame
- ▲ X-RAY3[®] Day/Night Sights
- ▲ 99 mm / 3.9" Barrel
- ▲ 15 Round Magazine
- ▲ Black G10 Checkered Grips
- ▲ Chrome Lined DLC Barrel
- ▲ Available in SAO

SPECIFICATIONS	LEGION BLACK	BSE	M11-A1
OVERALL LENGTH	188 mm / 7.4"	180 mm / 7.1"	180 mm / 7.1"
OVERALL HEIGHT	137 mm / 5.4"	139 mm / 5.5"	137 mm / 5.4"
OVERALL WIDTH	38 mm / 1.5"	38 mm / 1.5"	38 mm / 1.5"
BARREL LENGTH	99 mm / 3.9"	99 mm / 3.9"	99 mm / 3.9"
SIGHT RADIUS	145 mm / 5.7"	145 mm / 5.7"	145 mm / 5.7"
WEIGHT (WITH MAG)	0.90 kg / 31.7 oz	0.97 kg / 34.4 oz	0.84 kg / 29.6 oz
MAG CAPACITY	15 RDS	15 RDS	15 RDS

SP2022[®]

POLYMER PISTOL

The SP2022 is a full-size polymer pistol inspired by the SIG classic line. The SP2022 features the same DA/SA trigger found in SIG SAUER[®] Classic Line pistols, with a durable, lightweight and wear-resistant polymer frame with an integrated M1913 accessory rail. The SP2022 pistol earned an enviable reputation and proven track record of reliable performance in the hands of military and law enforcement professionals around the world.



9mm / 40 S&W

SP2022 NITRON[®]

- ▲ NITRON Stainless Steel Slide
- ▲ SIGLITE[®] Night Sights / Optional Suppressor Height Sights
- ▲ 99mm / 3.9" Barrel
- ▲ 15 (9mm) / 12 (40S&W) Round Magazine
- ▲ Available with a Threaded Barrel (9mm Only)
- ▲ Loaded Chamber Indicator
- ▲ Polymer Grip



Available with a Manual Safety



CALIBER
9 MM



CALIBER
40 S&W



9mm / 40 S&W

SP2022 NITRON MS

- ▲ NITRON Stainless Steel Slide
- ▲ SIGLITE[®] Night Sights / Optional Suppressor Height Sights
- ▲ 99mm / 3.9" Barrel
- ▲ 15 (9mm) / 12 (40S&W) Round Magazine
- ▲ Available with a Threaded Barrel (9mm Only)
- ▲ Manual Safety
- ▲ Loaded Chamber Indicator
- ▲ Polymer Grip



Optional threaded barrels available



Optional 17 round magazines available

SP2020 NITRON

OVERALL LENGTH	188 mm / 7.4"
OVERALL HEIGHT	145 mm / 5.7"
OVERALL WIDTH	38 mm / 1.5"
BARREL LENGTH	99 mm / 3.9"
SIGHT RADIUS	150 mm / 5.9"
WEIGHT (WITH MAG)	0.82 kg / 29.0 oz
MAG CAPACITY	15 RDS (9mm), 12 RDS (.40)

UTM & SIMUNITIONS

TRAINING SOLUTIONS

Ultimate Training Munitions and Simunitions training solutions provide law enforcement and military communities with the most realistic and non-lethal force-on-force, short range training systems.



UTM/SIMS PISTOL CONVERSION KITS

- ▲ Easy to Install
- ▲ Simple Exchange of Slide and Barrel, or Slide Assembly
- ▲ Feel and Function of "Live" Ammunition
- ▲ Unique Chamber Profile That Will Not Allow "Live/Lethal" Ammunition to Completely Chamber
- ▲ Great for Law Enforcement and Military Communities
- ▲ Fits P320 Full-Size, Compact, Carry in 9mm, and .40S&W
- ▲ Also Available for the Following SIG SAUER Models: P226, P229

.20GR

MCX LIGHTWEIGHT

NEXT GENERATION RIFLE BUILT ON THE MCX PLATFORM

The MCX platform has long been SIG SAUER’S breeding ground for developing the best rifle system in the world through extensive testing, continued innovation and customer feedback. The latest evolution is the MCX LT, based on its predecessor the MCX Virtus the new MCX LT has a lightened handguard with attachment screws for additional rigidity and a lightened profile barrel with improved accuracy. Other features of the MCX LT include an ambidextrous bolt catch and release on its lower and SL Muzzle device to attach the SIG SLX/SLH QD suppressors.

All MCX-LT’s are available in coyote or black finish and come in 5.56 NATO, 300BLK and 7.62x39.



Shown with ROME08T™ Closed Red Dot Sight and SLX Suppressor, Flip-up Iron Sights

SIG MCX LT 11.5”

- ▲ Select Fire (Safe, Semi, Full-Auto)
- ▲ Folding Stock with 1913 Rail Interface
- ▲ Modular Handguard and Barrel Length
- ▲ Adjustable Gas Piston Operating System
- ▲ Fully Ambidextrous Controls
- ▲ SIG SAUER 2-Stage Match-duo Trigger
- ▲ Available in a Pistol Version

5.56 NATO

Also Available in Black



CALIBER
5.56 NATO



SIG MCX LT 9”

- ▲ Optimized for Suppressors
- ▲ Folding Stock with 1913 Rail Interface
- ▲ SIG SAUER 2-Stage Match-duo Trigger
- ▲ 30 Round Magazine
- ▲ Available in a Pistol Version

5.56 NATO

Available in Black



SIG MCX LT 14.5”

- ▲ Select Fire (Safe, Semi, Full-Auto)
- ▲ 14.5” Barrel
- ▲ Telescoping/Folding 5-Position Stock
- ▲ 30 Round Magazine

5.56 NATO

Available in Black



SIG MCX LT 16”

- ▲ Optimized for Suppressors
- ▲ Folding Stock with 1913 Rail Interface
- ▲ SIG SAUER 2-Stage Match-duo Trigger
- ▲ 30 Round Magazine

5.56 NATO

Available in Coyote Tan

	MCX LT 9”	MCX LT 11.5”	MCX LT 14.5”	MCX LT 16”
ACTION TYPE	Select Fire (Safe, Semi, Full-Auto)			
AVAILABLE CALIBERS	5.56 NATO			
OPERATING SYSTEM	Short-Stroke Gas Piston w/ Multi-Position Adjustable Gas Block			
STOCK	Folding Collapsible Stock with 1913 Rail Interface			
FOREND TYPE	M-LOK®			
WEIGHT W/O MAG	6.3 lb	6.9 lb	7.25 lb	7.4 lb
LENGTH EXTENDED	26.75”	29.25”	32.25”	33.75”
BARREL LENGTH	9”	11.5”	14.5”	16”
RIFLING	1:7	1:7	1:7	1:7

MCX LIGHTWEIGHT

300BLK

The MCX platform has long been SIG SAUER’S breeding ground for developing the best rifle system in the world through extensive testing, continued innovation and customer feedback. The latest evolution is the MCX LT, based on its predecessor the MCX Virtus the new MCX LT has a lightened handguard with attachment screws for additional rigidity and a lightened profile barrel with improved accuracy. Other features of the MCX LT include an ambidextrous bolt catch and release on its lower and SL Muzzle device to attach the SIG SLX/SLH QD suppressors.

All MCX-LT’s are available in coyote or black finish and come in 5.56 NATO, 300BLK and 7.62x39.



Shown with ROMEO4T-PRO™ Iron Sights with Offset Mounts

SIG MCX LT 6.75”

- ▲ Optimized for Suppressors
- ▲ Folding Stock with 1913 Rail Interface
- ▲ Available in 300 BLK
- ▲ Modular Handguard and Barrel Length
- ▲ Adjustable Gas Piston Operating System
- ▲ Fully Ambidextrous Controls
- ▲ SIG SAUER 2-Stage Match-duo Trigger
- ▲ Available in a Pistol Version

300 BLK

Available in Coyote Tan



CALIBER 300 BLK



SIG MCX LT 9”

- ▲ Select Fire (Safe, Semi, Full-Auto)
- ▲ 229 mm / 9” Barrel
- ▲ Telescoping/Folding 5-Position Stock
- ▲ 30 Round Magazine
- ▲ Available in a Pistol Version

300 BLK Available in Black



SLH300-QD SUPPRESSOR

MCX LT 6.75”

MCX LT 9”

ACTION TYPE	SELECT FIRE (SAFE, SEMI, FULL-AUTO)	
AVAILABLE CALIBERS	300 BLK	
OPERATING SYSTEM	Short-Stroke Gas Piston w/ Multi-Position Adjustable Gas Block	
STOCK	Folding Collapsible Stock with 1913 Rail Interface	
FOREND TYPE	M-LOK®	
WEIGHT W/O MAG	2.7 kg / 6.0 lb	2.9 kg / 6.3 lb
LENGTH EXTENDED	622 mm / 24.5"	679 mm / 26.75"
BARREL LENGTH	171 mm / 6.75"	229 mm / 9"
RIFLING	1:5	1:5

MCX LIGHTWEIGHT

7.62X39

The new MCX LT brings the long awaited addition of the 7.62x39 caliber to the MCX family. Developed with a new latch system the 7.62x39 MCX LT was developed to handle the many varieties of 7.62 caliber ammunition while still maintaining reliability and smooth shooting. The New MCX LT, once again sets the bar for modular weapons technology.



Shown with Flip-Up Iron Sights

SIG MCX LT 11.5"

- ▲ Optimized for Suppressors
- ▲ Folding Stock with 1913 Rail Interface
- ▲ Available in 7.62X39 ATO
- ▲ Modular Handguard and Barrel Length
- ▲ Adjustable Gas Piston Operating System
- ▲ Fully Ambidextrous Controls
- ▲ SIG SAUER 2-Stage Match-duo Trigger
- ▲ Available in a Pistol Version

7.62X39

Available in Black



CALIBER
7.62X39 NATO



SIG MCX LT 16"

- ▲ Select Fire (Safe, Semi, Full-Auto)
- ▲ 406 mm / 16" Barrel
- ▲ Telescoping/Folding 5-Position Stock
- ▲ 30 Round Magazine

7.62X39

Available in Black



SLX762C-QD SUPPRESSOR

MCX LT 11.5"

MCX LT 16"

ACTION TYPE	SELECT FIRE (SAFE, SEMI, FULL-AUTO)	
AVAILABLE CALIBERS	7.62X39	
OPERATING SYSTEM	SHORT-STROKE GAS PISTON W/ MULTI-POSITION ADJUSTABLE GAS BLOCK	
STOCK	FOLDING COLLAPSIBLE STOCK WITH 1913 RAIL INTERFACE	
FOREND TYPE	M-LOK®	
WEIGHT W/O MAG	3.12 kg / 6.9 lb	3.35 kg / 7.4 lb
LENGTH EXTENDED	743 mm / 29.25"	857 mm / 33.75"
BARREL LENGTH	292 mm / 11.5"	406 mm / 16"
RIFLING	1:9.5	1:9.5

MCX RATTLER

SIG MCX IN A DISCRETE PLATFORM

Developed for elite special forces, the SIG MCX Rattler is the most compact rifle in the world. Capable of firing with stock folded from an overall length of 16”, it redefines the standard for concealable firepower.



Shown with ROMEO4T-PRO™
Closed Red Dot Sight

SIG MCX RATTLER

- ▲ Select Fire (Safe, Semi, Full-Auto)
- ▲ 140 mm / 5.5” 300BLK Barrel with 3-Prong Flash Hider
- ▲ M-LOK® Handguard
- ▲ Ambidextrous Charging Handle and Controls
- ▲ Flip-Up Iron Sights
- ▲ 30 Round Magazine

300 BLK



CALIBER
300 BLK



SIG MCX RATTLER

- ▲ Select Fire (Safe, Semi, Full-Auto)
- ▲ 140 mm / 5.5” 5.56 Barrel with Integrated 3-Prong Flash Hider
- ▲ Flip-Up Iron Sights
- ▲ 30 Round Magazine

5.56 NATO



CALIBER
5.56 NATO



SLX762C-QD SUPPRESSOR

	RATTLER 300 BLACKOUT	RATTLER 556 NATO
ACTION TYPE	Select Fire (Safe, Semi, Full-Auto)	
AVAILABLE CALIBERS	300BLK	5.56 NATO
OPERATING SYSTEM	Short-Stroke Gas Piston w/ Multi-Position Adjustable Gas Block	
STOCK	Minimalist Stock	
FOREND TYPE	M-LOK®	
WEIGHT W/O MAG	2.5 kg / 5.6 lb	2.63 kg / 5.8 lb
LENGTH EXTENDED	584 mm / 23.0"	603 mm / 23.75"
BARREL LENGTH	140 mm / 5.5"	140 mm / 5.5"
RIFLING	1:5	1:7

SIG MCX[®]

MODULAR RIFLE PLATFORM



Flip-Up Iron Sights
(Shown with Offset Mount)



MCX Small Charging
Handle (Available in
Small, Medium, Large)



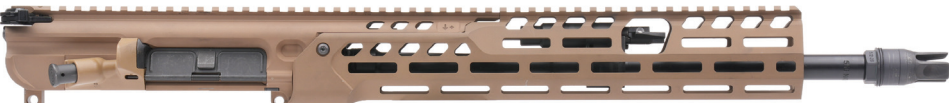
6.75" Upper Receiver



9" Upper Receiver



11.5" Upper Receiver



16" Upper Receiver

▲ Uppers Available in
Black and Coyote Tan



171 mm / 6.75" Barrel



228mm / 9" Barrel



292 mm / 11.5" Barrel



368 mm / 14.5" Barrel



406 mm / 16" Barrel



MagPul SLM Collapsible / Folding Stock



MagPul CTR Collapsible / Folding Stock



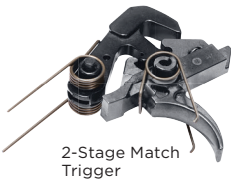
Telescoping / Folding Stock

5.56 NATO
MAGAZINE

5.56 NATO
Flash Hider



300BLK
Flash Hider



2-Stage Match
Trigger



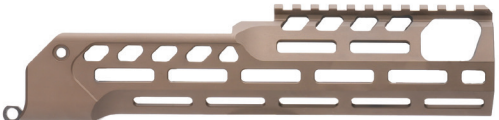
762X39
MAGAZINE



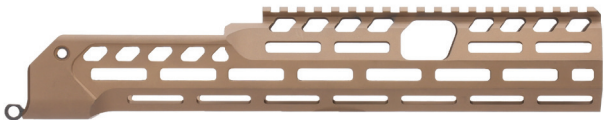
6.75" Handguard



9" Handguard



11" Handguard



16" Handguard



Visor-Compatible Stock



11.5" SD Handguard
Shown with Complete Upper and Direct Thread-on Suppressor

SIG MCX[®]

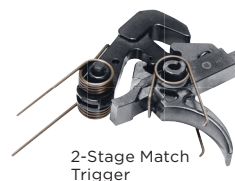
ACCESSORIES



Single Point
Bungee Sling



2-Point
Sling



2-Stage Match
Trigger



Grip Kit



ROMEO4T PRO



ROMEO4XT-PRO



JULIET4 Magnifier



ROMEO9T



TANGO6T Riflescope



ROMEO8T Red Dot Sight



5.56 NATO
77GR



Telescoping / Folding Stock

5.56 NATO
Flash Hider



300 BLK
TAC-TX 110GR



300 BLK
194GR



300 BLK
220GR



300 BLK
125GR

DIRECT THREAD SUPPRESSORS



SLX762C



SLX556



SLX762



SLX556C

CLUTCH-LOK QD SUPPRESSORS



SLX762C QD



SLH300 QD



SLX556 QD



SLX556C QD

MCX SPEAR

THE NEXT GENERATION RIFLE BUILT ON THE MCX PLATFORM

The SIG SAUER MCX is in service with premier fighting forces across the globe, the The MCX SPEAR integrates the firepower of the 6.8mm round with the combines the proven strength of the MCX. Features include a fully collapsible and folding stock, rear and side charging handle, free-floating reinforced M-LOK™ handguard, full ambidextrous controls, and quick-detach suppressor. The MCX SPEAR is a cutting-edge modular platform. The design allows the end-user to change calibers between, 6.8, 7.62X51, and 6.5 Creedmoor. Additionally, barrel length, handguards and buttstocks can be changed for various training or mission profiles.



SIG MCX SPEAR 16"

- ▲ Optimized for Suppressors
- ▲ Folding Stock with 1913 Rail Interface
- ▲ 406 mm / 16" Barrel
- ▲ 20 Round Magazine

7.62x51 NATO HYBRID



Shown with TANGO6T
Riflescope and SLX Suppressor

SIG MCX SPEAR

- ▲ Optimized for Suppressors
- ▲ Folding Stock with 1913 Rail Interface
- ▲ Non-reciprocating Side-charging Handle with Standard M4 Style Charging Handle
- ▲ Modular Handguard and Barrel Length
- ▲ Adjustable Gas Piston Operating System
- ▲ Fully Ambidextrous Controls
- ▲ SIG SAUER 2-Stage Match-duo Trigger

6.8X51 HYBRID / 7.62X51 NATO HYBRID / 6.5 CREEDMOOR HYBRID



CALIBER
6.5 CREEDMOOR
HYBRID



CALIBER
6.8X51
HYBRID



CALIBER
7.62X51 NATO
HYBRID

SIG MCX SPEAR 13"

SIG MCX SPEAR 16"

ACTION TYPE	Select Fire (Safe, Semi, Full-Auto)
AVAILABLE CALIBERS	6.8X51 HYBRID / 7.62x51 NATO / 6.5 CREEDMOOR
OPERATING SYSTEM	Gas Piston, Rotating Bolt
STOCK	1913 Stock Compatible
FOREND TYPE	M-LOK®

MCX SPEAR

THE NEXT GENERATION RIFLE BUILT ON THE MCX PLATFORM

The MCX SPEAR was built on the SIG SAUER® MCX foundation and adapted ot meet the demands of the U.S. Arm’s Next Generation Squad Weapon (NGSW) Program.

The SPEAR offers configurations beyond the program requirement, including various barrel lengths, calibers and other user driven features. The MCX SPEAR is ready for any end user requirements.



MCX SPEAR RAPTOR

- ▲ Select Fire (Safe, Semi, Full-Auto)
- ▲ 9" Barrel
- ▲ Telescoping/Folding 5-Position Stock
- ▲ 20 Round Magazine

6.8X51 HYBRID / 7.62x51 NATO HYBRID / 6.5 CREEDMOOR HYBRID

Shown with ROMEO8T SIGHT and SLX Suppressor



Shown with TANGO6 Riflescope and SLH Suppressor

MCX SPEAR DMR

- ▲ Optimized for Suppressors
- ▲ Folding Stock with 1913 Rail Interface
- ▲ Non-reciprocating Side-charging Handle with Standard M4 Style Charging Handle
- ▲ Modular Handguard and Barrel Length
- ▲ Adjustable Gas Piston Operating System
- ▲ Fully Ambidextrous Controls
- ▲ SIG SAUER 2-Stage Match-duo Trigger

6.8X51 HYBRID / 7.62X51 NATO HYBRID / 6.5 CREEDMOOR HYBRID



CALIBER
6.5 CREEDMOOR
HYBRID



CALIBER
6.8X51
HYBRID



CALIBER
7.62X51 NATO
HYBRID

	SIG MCX SPEAR 9"	MCX SPEAR DMR
ACTION TYPE	Select Fire (Safe, Semi, Full-Auto)	
AVAILABLE CALIBERS	6.8x51 HYBRID / 7.62x51 NATO HYBRID / 6.5 Creedmoor HYBRID	
OPERATING SYSTEM	Gas Piston, Rotating Bolt	
STOCK	1913 Stock Compatible	
FOREND TYPE	M-LOK®	

XM250

MAN PORTABLE, BELT-FED, LIGHTWEIGHT MACHINE GUN

With an emphasis on significant reductions in soldier load and enhanced combat performance, SIG SAUER designed the SIG LMG to be 40% lighter than current systems, and dramatically reduce felt recoil while maintaining traditional belt-fed operation to increase down range capability. The SIG LMG 6.8mm machine gun features ambidextrous M4 style ergonomics, quick detach magazines, ambidextrous side charging handle, increased M1913 rail space, and QD suppressor, while vastly improves upon the operation and function of legacy weapon systems.



BELT FED MAGAZINE
▲ Quick Change Starter Belts Available in 50 and 100 Round Configurations



Shown with SLX Suppressor ROME08T Red Dot and Quick Change Starter Belt

SIG XM250

- ▲ Lightweight Man Portable, Contact for Weights
- ▲ Reduced Felt Recoil
- ▲ Simple Caliber Conversion
- ▲ Complete Weapon Solution (SIG ROME08 Optic, Suppressor and Ammo)
- ▲ Optimized for High Pressure High Velocity Ammunition
- ▲ Side Folding Feed cover, Side ejecting Brass-Links
- ▲ Mounts in Standard 249 Cradle Mount

6.8X51 HYBRID / 7.62X51 NATO HYBRID / 6.5 CREEDMOOR HYBRID



CALIBER
**6.5 CREEDMOOR
HYBRID**



CALIBER
**6.8X51
HYBRID**



CALIBER
**7.62X51 NATO
HYBRID**

SIG XM250

ACTION TYPE	Safe / Full-Auto / Semi-Auto
CALIBER	6.8x51 HYBRID / 7.62x51NATO HYBRID / 6.5 Creedmoor HYBRID
OPERATING SYSTEM	Gas Piston, Open Bolt
RECEIVER MATERIAL	Aluminum
RECEIVER FINISH	Hard Coat Anodized
BARREL MATERIAL	Hammer Forged Steel
FIRE CONTROL / SIGHTS	ROME08T / BUIS
GAS SETTING	Normal and Adverse
LENGTH COLLAPSED	940mm / 37"
HEIGHT WITH BI-POD	298mm / 11.7"
WIDTH WITH BI-POD	234mm / 9.2"
BARREL LENGTH	406mm / 16"
TWIST RATE	1:10 in Right Hand / 1:254mm Right Hand
FELT RECOIL	@ 2 ft. lbs. / 2.7 N m
BELT FED MAGAZINE	50 RD, 100 RD

SIG LMG

NEXT GENERATION LIGHT MACHINE GUN

With an emphasis on significant reductions in soldier load and enhanced combat performance, SIG SAUER® designed the World SIG LMG to be 40% lighter than current systems, and dramatically reduce felt recoil while maintaining traditional belt-fed operation to increase down range capability. The world SIG LMG can be chambered in 7.62x51, 6.5 Creedmoor or the newly selected 6.8x51 Hybrid ammunition. The world Machine gun features quick detach magazines, quick change barrels with carry handle, increased M1913 rail space and QD suppressor. The SIG LMG also features ambidextrous M4 style ergonomics, ambidextrous non reciprocating side charging handle, while vastly improves upon the operation and function of legacy weapon systems.



Shown with SLX-Suppressor
ROMEO8T Red Dot and Quick Change Starter Belt

SIG LMG BLACK

- ▲ Lightweight Man Portable, Contact for Weights
- ▲ Reduced Felt Recoil
- ▲ Simple Caliber Conversion
- ▲ Complete Weapon Solution (SIG ROMEO8 Optic, Suppressor and Ammo)
- ▲ Optimized for High Pressure High Velocity Ammunition
- ▲ Side Folding Feed cover, Side ejecting Brass-Links
- ▲ Mounts in Standard 249 Cradle Mount

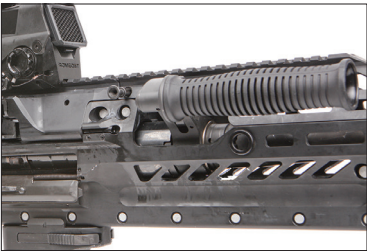
6.8X51 HYBRID / 7.62X51 NATO HYBRID / 6.5 CREEDMOOR HYBRID



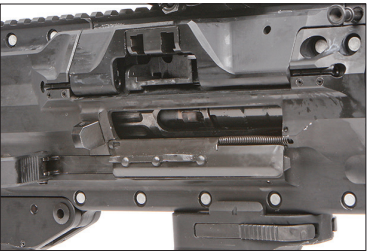
CALIBER
6.5 CREEDMOOR
HYBRID

CALIBER
6.8X51
HYBRID

CALIBER
7.62X51 NATO
HYBRID



QD Handle on Barrel



Ambidextrous Chargeing Handle



Collapsible Folding Stock

SIG LMG

ACTION TYPE	Safe / Full-Auto / Semi-Auto
CALIBER	6.8x51 HYBRID / 7.62x51 NATO HYBRID / 6.5 Creedmoor HYBRID
OPERATING SYSTEM	Gas Piston, Open Bolt
RECEIVER MATERIAL	Aluminum
RECEIVER FINISH	Hard Coat Anodized
BARREL MATERIAL	Hammer Forged Steel
FIRE CONTROL / SIGHTS	ROMEO8T / BUIS
GAS SETTING	Normal and Adverse
LENGTH COLLAPSED	940mm / 37"
HEIGHT WITH BI-POD	298mm / 11.7"
WIDTH WITH BI-POD	234mm / 9.2"
BARREL LENGTH	406mm / 16"
TWIST RATE	1:10 in Right Hand / 1:254mm Right Hand
FELT RECOIL	@ 2 ft. lbs. / 2.7 N m
BELT FED MAGAZINE	50 RD, 100 RD

SIG MMG

MAN PORTABLE, BELT-FED, MEDIUM MACHINE GUN

The SIG SAUER® MMG is a belt-fed, lightweight, man portable medium machine gun chambered in 338 Norma Mag. The SIG MMG features a short-stroke gas piston system and a proprietary recoil mitigation system, with a free-floating, quick-change barrel, ambidextrous controls, switchable feed tray, charging handle that can be alternated to either side depending on operator preference, and as a modern, multi-caliber, modular system the new SIG MMG is convertible to 7.62x51.



BELT FED MAGAZINE

▲ Quick Change Starter Belts Available in 50, and 100 Round Configurations



SIG MMG

- ▲ Lightweight Man Portable, Contact for Weights
- ▲ Reduced Felt Recoil
- ▲ Caliber Conversion
- ▲ Complete Weapon Solution (SIG Romeo8 Optic, Suppressor and Ammo)
- ▲ Optimized for High Pressure High Velocity Ammunition
- ▲ Side Folding Feed cover, Side ejecting Brass-Links
- ▲ Mounts in any Existing 240 Cradle

338 NORMA MAG / 7.62X51 NATO / 338 NORMA HYBRID



SIG MMG	
ACTION TYPE	Safe / Full-Auto / Semi-Auto
CALIBER	338 Norma Mag / 7.62x51NATO / 338 Norma Hybrid
OPERATING SYSTEM	Gas Piston, Open Bolt
RECEIVER MATERIAL	Aluminum
RECEIVER FINISH	Hard Coat Anodized
BARREL MATERIAL	Hammer Forged Steel
FIRE CONTROL / SIGHTS	ROME08T / BUIS
GAS SETTING	Normal and Adverse
LENGTH COLLAPSED	1270mm / 50"
HEIGHT WITH BI-POD	368mm / 14.5"
WIDTH WITH BI-POD	305mm / 12.0"
BARREL LENGTH	24" (338 Nm) 22" (7.62) / 610 mm (338Nm) 559 mm (7.62)
TWIST RATE	1:9.4 in. right hand / 1:239mm (338 Nm) 9 Kg (7.62)
FELT RECOIL	@ 3 ft. lbs. / 4.07 N m
BELT FED MAGAZINE	50 RD, 100 RD, Flex Chute-Ammo Can

REMOTE WEAPON STATION

ADVANCED SITUATIONAL AWARENESS, FULLY STABILIZED & AI ALGORITHMS IN ONE ULTRA - LIGHT SYSTEM



APPLICATIONS

- ▲ Fits all manned or unmanned vehicles capable of supporting remote weapons stations
- ▲ Suitable for static positioning to protect critical infrastructure and borders
- ▲ Full combat solution tailor made to clients specifications
- ▲ Can support non-kinetic or cUAS operations based on customer's operational requirements

SPECIFICATIONS

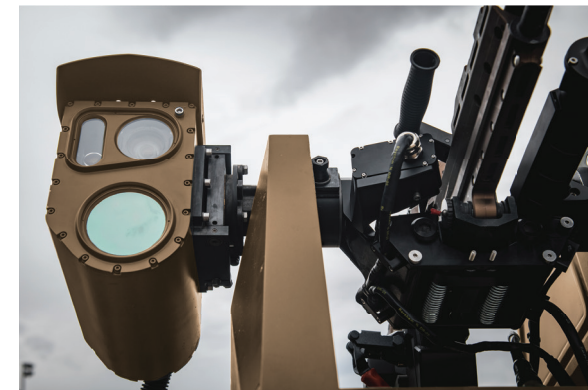
- ▲ Light weight – 85 Kg, low silhouette – 60 cm
- ▲ Azimuth rotation 360° at a rate of 90° per second
- ▲ Elevation – from approx. + 60° to -30° (machine gun dependent)
- ▲ Zoom – Optical zoom is 30x and thermal zoom is 26mm – 105m
- ▲ Dual axis stabilization & smart ballistic computer
- ▲ Fits various machine guns such as M2 12.7 / FN MAG 7.62 / NEGEV 5.56 or 7.62 / SIG SAUER LMG / MMG
- ▲ Ultra low power consumption and MIL STD

ADVANCED SITUATIONAL AWARENESS - DAY & NIGHT

- ▲ High definition, high frame rate, low latency day imaging sensor
- ▲ Thermal imaging with continuous optical zoom and autofocus
- ▲ Eye Safe Laser Range Finder
- ▲ 2 rear cameras for weapon and ammunition management
- ▲ Automatic tracking and video motion detection

RANGER REMOTE CONTROL UNIT (RCU)

- ▲ All in one RCU – Touch Screen, Jacket with buttons and built in "Point to Point" TM
- ▲ Automatic tracking and video motion detection
- ▲ Modular secured communication options
- ▲ AI Algorithms – "Point to Point" TM, autonomus capability system (ACS),
- ▲ Fire Inhibiting Zones (FIZ) & Target Prediction Algorithm (TPA)
- ▲ Multi-layered firing safety system & multiple video views



SIG MPX[®]

GAS PISTON SUBGUN

The MPX sets a new standard for performance and quality in the sub-gun category. Featuring AR style controls and a closed bolt piston system, the MPX is designed to fulfill the needs of competitive and professional users alike.

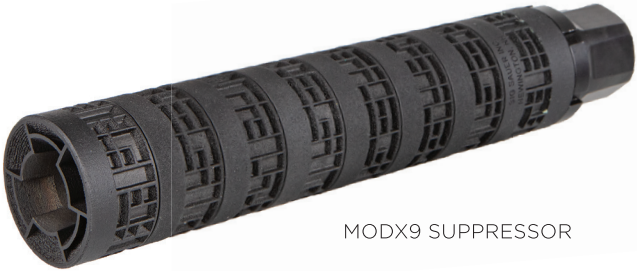


Shown with Telescoping / Folding Stock, ROMEO4T-PRO Closed Red Dot Sight and MODX-9 Suppressor, and 6 inch handguard



- SIG MPX[®] 8"**
- ▲ Select Fire (Safe, Semi, Full-Auto)
 - ▲ 203 mm / 8.0" Barrel with A1 Flash Hider
 - ▲ Telescoping/Folding 5-Position Stock
 - ▲ M-LOK[®] Handguard
 - ▲ 30 Round Magazine

9mm



MODX9 SUPPRESSOR

SIG MPX K 4.5"

- ▲ Select Fire (Safe, Semi, Full-Auto)
- ▲ 114 mm / 4.5" Barrel
- ▲ Telescoping/Folding 5-Position Stock
- ▲ M-LOK[®] Handguard
- ▲ 35 Round Magazine

9MM



CALIBER
9 MM

	MPX	MPX K
ACTION TYPE	Select Fire (Safe, Semi, Full-Auto)	
AVAILABLE CALIBERS	9MM	
OPERATING SYSTEM	Closed, Full Locked Bolt, Short-Stroke Piston System	
STOCK	Telescoping/Folding 5-Position Stock	Telescoping/Folding 5-Position Stock
FOREND TYPE	M-LOK [®]	M-LOK
WEIGHT W/O MAG	2.54 kg / 5.6 lb	2.36 kg / 5.2 lb
OVERALL LENGTH	660 mm / 26"	559 mm / 22"
BARREL LENGTH	203 mm / 8.0"	114 mm / 4.5"
RIFLING	1:10	1:10

SIG MPX[®]

RIFLE PLATFORM



MPX Charging Handle



Flip-Up Iron Sights
(Shown with Offset Mount)



M-LOK Vert Grip



M-LOK Hand Stop



114 mm / 4.5" Barrel



203 mm / 8" Barrel



CALIBER
9 MM



Single Point
Bungee Sling



Telescoping / Folding Stock



MODX-9 Suppressor



Mini Folding Stock



2-Point
Sling



Thin Folding Aluminum Stock



Visor-Compatible Stock



Collapsible Stock



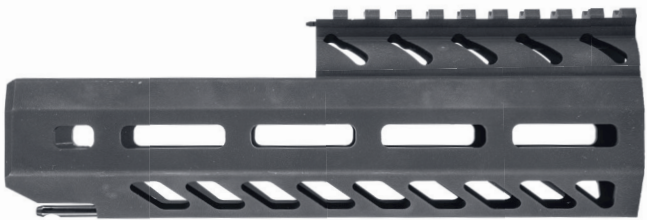
M4 Collapsible / Folding Stock



20 Round Magazine



35 Round Magazine



8" SD Handguard



4" Handguard

516

PISTON DRIVEN AR PLATFORM

An enhanced AR platform with a clean-running, more reliable operating system, designed for suppressed use.



Shown with ROMEO4T™
Red Dot Sight

- SIG516 11.5"**
- ▲ Select Fire (Safe, Semi, Full-Auto)
 - ▲ 292 mm / 11.5" Barrel
 - ▲ 6-Position Adjustable Stock
 - ▲ MIL-STD 1913 Quad Rail Handguard
 - ▲ Ambidextrous Controls
 - ▲ 30 Round Magazine

5.56 NATO



Shown with ROMEO4T™Closed Red Dot Sight

- SIG516 16"**
- ▲ Select Fire (Safe, Semi, Full-Auto)
 - ▲ 406 mm / 16" Barrel
 - ▲ 6-Position Adjustable Stock
 - ▲ MIL-STD 1913 Quad Rail Handguard
 - ▲ Ambidextrous Controls
 - ▲ 30 Round Magazine

5.56 NATO



CALIBER
5.56 NATO

	516 11.5"	516 16"
ACTION TYPE	Select Fire (Safe, Semi, Full-Auto)	
AVAILABLE CALIBERS	5.56 NATO	
OPERATING SYSTEM	3-Position Adjustable Short-Stroke Gas Piston System	
STOCK	6-Position Collapsible Stock	
FOREND TYPE	MIL-STD 1913 Quad Rail Handguard	
WEIGHT W/O MAG	3.27 kg / 7.2 lb	3.29 kg / 7.25 lb
OVERALL LENGTH	698.5 mm /27.5"	908.05 mm /35.75"
BARREL LENGTH	292 mm / 11.5"	406 mm / 16.0"
RIFLING	1:7	

716i

DIRECT IMPINGEMENT RIFLE

SIG SAUER® has taken the proven features of the SIGM400 and applied them into a potent AR-based rifle chambered in 7.62 NATO. Utilizing the tried and true Direct Impingement System, an M1913 Mil-Std rail, free-floating barrel, aluminum forend, and telescoping stock, the SIG716 is the rifle of choice when you require the power of a larger caliber carbine.



TANGO6-DMR 5-30X56

- ▲ Designed for MSR/AR platforms
- ▲ Ideal for Close to Mid to Long Range Tactical Engagements
- ▲ Fiber-optic Power Indicator
- ▲ Multiple Reticle Options Available
- ▲ Daylight Bright Illumination with Locking Illumination dial



Shown with TANGO6-DMR Scope

SIG716i 16"

- ▲ Select Fire (Safe, Semi, Auto)
- ▲ 406 mm / 16" Barrel
- ▲ M-LOK® Handguard
- ▲ 20 Round Magazine

7.62X51 NATO



CALIBER
7.62X51 NATO

716i 16"	
ACTION TYPE	Select Fire (Safe, Semi, Auto)
AVAILABLE CALIBERS	7.62x51 NATO
OPERATING SYSTEM	Direct Impingement
STOCK	6-Position Telescoping Stock
FOREND TYPE	Free Floating M-LOK®
WEIGHT W/O MAG	3.61 kg / 7.95 lb
OVERALL LENGTH	958.85 mm / 37.75"
BARREL LENGTH	406 mm / 16"
RIFLING	1:10

CROSS STX

PURPOSE-BUILT FOR THE PROFESSIONAL USER

The new CROSS STX from SIG SAUER is the latest evolution in the CROSS bolt-action rifle series. The CROSS STX brings a new level of performance and capability to the tactical shooter. The CROSS STX is the result of input from professional end-users looking for extreme performance in a lightweight, long-range platform. Featuring a 20” precision barrel, full-length Picatinny top rail, thumb-rest safety selector, PRS-stye grip, AR-style controls, and AR-style ergonomics.



TANGO-DMR 3-18X44

- ▲ Zero Stop, Multi Turn, Press to Unlock Elevation Dial
- ▲ Illuminated FFP MRAD or MOA Milling 2.0 Reticle
- ▲ Superior Optical Design with 6x Magnification Range
- ▲ Low Profile Capped Windage
- ▲ Updated Reticles
- ▲ Locking Illumination Control



CROSS STX

- ▲ Free Float Mlock Handguard w/ Full length 20 MOA top rail
- ▲ New 20in heavy barrel equipped with SLH/SLX ready suppressor flash hider
- ▲ External Paddle Magazine release
- ▲ 2 Stage Adjustable Match Trigger
- ▲ Folding Adjustable Precision Stock, 30 Inches Overall Length Folded
- ▲ Includes a PRS Style Grip and a right side thumb rest safety lever

7.62X51 NATO / 6.5 CREEDMOOR



CALIBER
6.5 CREEDMOOR



CALIBER
308 WIN

CROSS STX	
ACTION TYPE	Bolt Action
AVAILABLE CALIBERS	6.5CM / .308 WIN
OPERATING SYSTEM	Direct Impingement
STOCK	Folding Adjustable Precision
FOREND TYPE	Free Floating M-LOK®
WEIGHT W/O MAG	3.51 kg / 7.7 lb
OVERALL LENGTH	1079.5 mm / 40.5"
BARREL LENGTH	508 mm / 20"
RIFLING	(6.5) 1:203 mm / 1:8 in , (308) 1:254 mm / 1:10 in

SIGM400[®] PRO

DIRECT IMPINGEMENT AR PLATFORM

Designed for elite forces and refined by the world's best professional shooters to be the ultimate AR performance rifle.



Shown with ROMEO4T™Closed Red Dot Sight and SLX-556 Suppressor

SIGM400 PRO 11.5"

- ▲ Select Fire (Safe, Semi, Full-Auto)
- ▲ 292 mm / 11.5" Barrel
- ▲ 6-Position Telescoping Stock
- ▲ Free-Float M-LOK® Handguard
- ▲ Flip-Up Sights
- ▲ 30 Round Magazine

5.56 NATO



CALIBER
5.56 NATO



SIGM400 14.5" PRO

- ▲ Select Fire (Safe, Semi, Full-Auto)
- ▲ 368 mm / 14.5" Barrel
- ▲ 6-Position Telescoping Stock
- ▲ Free-Float M-LOK® Handguard
- ▲ Flip-Up Sights
- ▲ 30 Round Magazine

5.56 NATO

Shown with Flip-Up Iron Sights



SIGM400 16" PRO

- ▲ Select Fire (Safe, Semi, Full-Auto)
- ▲ 406 mm / 16" Barrel
- ▲ 6-Position Telescoping Stock
- ▲ Free-Float M-LOK® Handguard
- ▲ Flip-Up Sights
- ▲ 30 Round Magazine

5.56 NATO

Shown with Flip-Up Iron Sights

	11.5" PRO	14.5" PRO	16" PRO
ACTION TYPE	Select Fire (Safe, Semi, Full-Auto)		
AVAILABLE CALIBERS	5.56 NATO		
OPERATING SYSTEM	Direct Impingement Gas		
STOCK	6-Position Collapsible Stock		
FOREND TYPE	Free-Float M-LOK®		
WEIGHT W/O MAG	2.53 kg / 5.58 lb	2.83 kg / 6.25 lb	2.95 kg / 6.5 lb
LENGTH EXTENDED	762 mm /30"	838 mm /33"	876 mm /34.5"
BARREL LENGTH	292 mm / 11.5"	368 mm / 14.5"	406 mm / 16.0"
RIFLING	1:7		

RIFLE

ACCESSORIES



Flip-Up Iron Sights
(Shown with Offset Mount)



SIG FLIP-UP IRON SIGHTS

SIG SAUER Flip Up Iron Sights

- ▲ SIG SAUER rail mounted flip up iron sight set for AR rifles.
- ▲ Fits Models; SIGM400 / SIG516 / SIG716 / SIG MCX
- ▲ Machined Steel



SIG MCX® AR UPGRADE KIT

Transform any MIL-SPEC AR lower receiver into the adaptive and modular SIG MCX® VIRTUS.

- ▲ Complete SIG MCX Upper Receiver Assembly
- ▲ Lower Receiver Stock Adapter
- ▲ Side-Folding AR Buffer Tube Knuckle
- ▲ Two-Stage Match Duo Trigger



SIG UPPER RECEIVERS

Transform any MIL-SPEC AR lower receiver into a Piston Gas System or Direct Impingement rifle

- ▲ Complete SIG516, 716, or M400 Upper Receiver Assemblies
- ▲ Available in various lengths
- ▲ Machined Aluminum
- ▲ Includes Upper Receiver, Barrel Assembly, Bolt, and Charging Handle



SIG AR-15 / M16 SLINGS

- ▲ Single point QD Sling with Built-in Bungee for Added Comfort when Bearing Weight for Longer Durations
- ▲ Two Point QD Sling Nylon Webbing Fully Adjustable Nylon Hardware



SIG AR STOCKS

Options as diverse as your mission.

- ▲ M4 Adjustable Folding
- ▲ 6-Position CTR Stock
- ▲ Skeletonized Mini
- ▲ Lower Receiver Stock Adapter
- ▲ Many More...



SIG AR-15 / M16 CLEANING KIT

- ▲ Utility Brush/Cleaning Brush
- ▲ Bronze Bore Brush
- ▲ Bronze and Stainless Steel Chamber Brush
- ▲ 5 Cleaning Rods
- ▲ Plastic Bottle for Oils or Solvents



SIG716I GRIP KIT

- ▲ Vertical Grip, Barricade Stop, Handstop, Long and Short Rail Sections
- ▲ M-LOK Compatible



SIG MATCHLITE™ TRIGGER

A trigger made for a SIG SAUER rifle, and perfect for any AR.

- ▲ Match Grade Performance
- ▲ Non-Adjustable
- ▲ Includes Hammer and Trigger Pins



SIG MCX RATTLER CONVERSION KIT

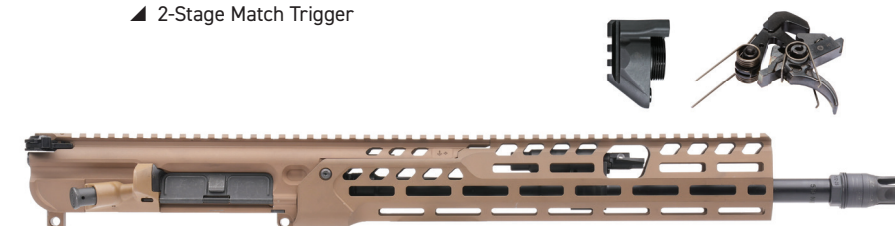
Convert any MIL-SPEC AR Lower into a MCX Rattler

- ▲ Complete SIG MCX Rattler Upper Receiver Assembly
- ▲ Lower Receiver Stock Adapter
- ▲ Side-Folding AR Buffer Tube Knuckle
- ▲ Two-Stage Match Duo Trigger



SIG MCX AR CONVERSION KIT

- ▲ Convert Mil-Spec AR Lower Receiver to SIG MCX System
- ▲ Complete SIG MCX Upper Receiver Assembly
- ▲ Lower Receiver Stock Adapter
- ▲ 2-Stage Match Trigger



UTM & SIMUNITIONS

TRAINING SOLUTIONS

Ultimate Training Munitions and Simunitions training solutions provide law enforcement and military communities with the most realistic and non-lethal force-on-force, short range training systems.



UTM/SIMS BARREL/SUPPRESSOR CONVERSION - MCX



UTM/SIMS RIFLE CONVERSION KITS

- ▲ Easy to Install
- ▲ Simple Exchange of the Bolt and Carrier Assembly
- ▲ Feel and Function of "Live" Ammunition
- ▲ Offset Firing Pin design Strikes Outside of "Live/Lethal" Ammunition Primer Pocket for Added Safety while Using UTM/SIMS Ammunition
- ▲ Includes Bolt Carrier and Blue Training Magazine
- ▲ Great for Law Enforcement and Military Communities



UTM/SIMS BOLT / SPRING CONVERSION - MCX



UTM/SIMS MAGAZINE CONVERSION - MCX

TANGO-DMR™

THE CHOICE OF THE U.S. ARMY AND SPECIAL OPERATIONS

TANGO6T riflescopes were selected by the US Army and USSOCOM to deliver unmatched performance and optical clarity when it matters most. TANGO6T riflescopes are MIL-STD810G tested and approved and are assembled in the U.S.A. The TANGO6 6X super-zoom riflescope has you covered for mid to long-range engagements, precision rifle competitions to big game hunting. From bolt actions to MSRs, the TANGO6 is built for versatility.



Assembled in the U.S.A.

TANGO-DMR 5-30X56 FFP

- ▲ Designed for MSR/AR platforms
- ▲ Ideal for Mid to Long Range Tactical Engagements.
- ▲ Fiber-Optic Power Indicator
- ▲ Multiple Reticle Options Available
- ▲ Daylight Bright Illumination with Locking Illumination Dial

Standard Features

- ▲ Zero Stop, Multi Turn, Press to Unlock Elevation Dial
- ▲ Illuminated FFP in MRAD or MOA DEV-L 2.0 Reticle
- ▲ Superior Optical Design with 6x Magnification Range
- ▲ Low Profile Capped Windage
- ▲ Updated Reticles
- ▲ Locking Illumination Control
- ▲ Light Weight Design
- ▲ Includes Sunshade and Removable Throw Lever

34MM MAINTUBE



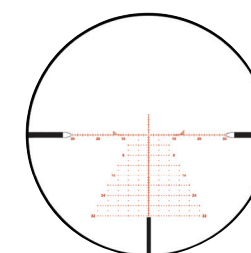
34MM MAINTUBE

TANGO-DMR 3-18X44 SFP

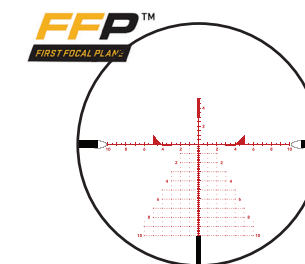
- ▲ Designed for AR Platforms
- ▲ Ideal for Close to Mid-Range Tactical Engagements
- ▲ Fiber Optic Power Indicator
- ▲ Multiple Reticle Options Available
- ▲ Daylight Bright Illumination with Locking Illumination Dial

RETICLES

5-30X56MM

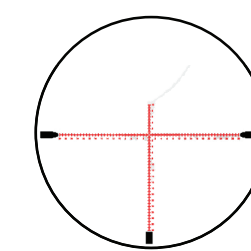


MOA DEV-L

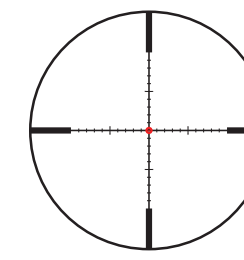


MRAD DEV-L

3-18X44MM



MRAD



MOA MILLING
HELLFIRE

TANGO6™

THE CHOICE OF THE U.S. ARMY AND SPECIAL OPERATIONS

TANGO6T riflescopes were selected by the US Army and USSOCOM to deliver unmatched performance and optical clarity when it matters most. TANGO6T riflescopes are MIL-STD810G tested and approved and are assembled in the U.S.A. The TANGO6 6X super-zoom riflescope has you covered for mid to long-range engagements, precision rifle competitions to big game hunting. From bolt actions to MSRs, the TANGO6 is built for versatility.



TANGO6T OPTIC HAS BEEN SELECTED BY:

U.S. ARMY Squad Designated Marksman Rifle (SDMR)
USSOCOM Squad-Variable Powered Scope (S-VPS)
Department of Defense - Direct View Optic (DVO)



Assembled in the U.S.A.

TANGO6T 1-6X24 FFP

- ▲ Designed for MSR/AR platforms
- ▲ Ideal for Close to Mid-Range Tactical Engagements.
- ▲ Fiber-optic Power Indicator
- ▲ Multiple Reticle Options Available
- ▲ Daylight Bright Illumination with Locking Illumination Dial

Standard Features

- ▲ 6x Super-zoom Advanced Optical System
- ▲ First and Second Focal Plane Reticles
- ▲ Throwlever Included with all SKUs
- ▲ Fast Focus Eyepiece
- ▲ Waterproof (IPX-8 rated) and Fog-proof Performance
- ▲ Night Vision Illuminated Reticle Settings with Locking Dial
- ▲ Laser Engraved Mounting Line to Align Rifle Scope to Scope Rings
- ▲ Flat Dark Earth Anodized Finish
- ▲ Assembled in the U.S.A.

30MM MAINTUBE

Selected by U.S. Air Force and SOCOM for S-VPS contract.



30MM MAINTUBE

TANGO6T™ 1-6X24 SFP

- ▲ Designed for AR Platforms
- ▲ Ideal for Close to Mid-Range Tactical Engagements
- ▲ Fiber Optic Power Indicator
- ▲ Multiple Reticle Options Available
- ▲ HellFire® Reticles: Fiber Optics to Vary Intensity of Central Aiming Point (SFP)
- ▲ Daylight Bright Illumination with Locking Illumination Dial



34MM MAINTUBE

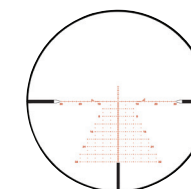
TANGO6 5-30X56

- ▲ Designed for AR and Bolt Action Platforms
- ▲ Long-Range Precision Shooting, Tactical Engagements and Long-Range Hunting
- ▲ Fiber Optic Power Indicator
- ▲ Offered in FFP with Multiple Reticle Options
- ▲ LEVELPLEX Anti-Cant System

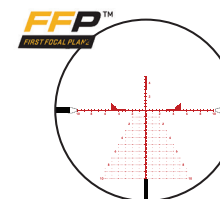
RETICLES

5-30X56MM

DEV-L MOA Milling, FFP
DEV-L MRAD Milling, FFP



MOA DEV-L

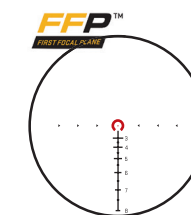


MRAD DEV-L

1-6X24MM

FFP - 5.56/7.62 Horseshoe Dot
FFP - DWLR6

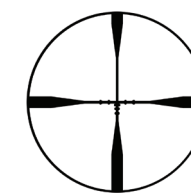
SFP - MOA Milling HELLFIRE
SFP - FL-6 HELLFIRE



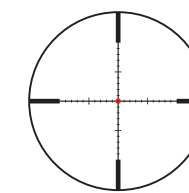
5.56MM / 7.62MM
Horseshoe Dot



DWLR6



FL-6
HELLFIRE



MOA MILLING
HELLFIRE

WHAT IS BDX™

SIG SAUER® built on the success of BDX, adding features and benefits that allow shooters to 'hit the ground running' with their BDX systems. All BDX rangefinders come preprogrammed with 9 ballistic profiles that cover most centerfire rifle cartridges. BDX combo kits will now come pre-bonded from the factory. All users have to do to use their systems is mount and zero their riflescopes. If users want to unlock the complete feature set of BDX, they are still able to do this via the smartphone app.

BDX RANGEFINDER

QuickBond™ for app-less bonding of BDX equipped rangefinders and sights

There is no need for the smartphone app to connect your BDX devices. Simply press and hold two buttons and your BDX rangefinder will bond with the nearest BDX enabled sight.

Pre-loaded ballistic groups available on KILO® BDX rangefinders to quickly get you on target

Every BDX rangefinder comes preloaded with 9 distinct ballistic groups. These groups represent the ballistics for each popular centerfire caliber available, as well as crossbows and muzzleloaders. Simply pick the group that matches your caliber.

Download the BDX app to unlock the full, advanced capabilities and features of the BDX system

Setup a custom profile utilizing the Applied Ballistics® bullet library and the exact muzzle velocity of your firearm. BDX will do the rest.

BDX RIFLESCOPE

The powerful SIERRA3BDX and SIERRA6BDX riflescopes revolutionize the art of holdover calculation. Again, set your ballistic profile in the SIG BDX app, sync the app with your riflescope and then configure multiple holdover points in the digital ballistic reticle. When you view your target through the reticle each of your exact holdover points is illuminated. No more turrets to adjust or calculations to make.

BDX SYSTEMS

When used together, KILO BDX rangefinders and BDX equipped riflescopes combine to create the most advanced optics system available on the market today. Simply configure your ballistics profile in the BDX app, pair your KILO BDX rangefinder with the app, and then bond it to your BDX equipped riflescope. When you range your target the KILO BDX rangefinder automatically sends your specific holdover data to your BDX equipped riflescope giving you an illuminated holdover dot. It's simple and fast.

RIFLESCOPES

- ▲ BDC reticle is customized to shooter's ballistics and environmental profile prior to hunting
- ▲ BDC reticle can be set with up to eight holdover dots at any distances out to 800 yards
- ▲ Digital Focal Plane™ reticle scales with zoom like a first focal plane riflescope
- ▲ HD Glass and Spectracote™ lens coatings
- ▲ LEVELPLEX® digital anti-cant system



RANGEFINDERS

- ▲ Embedded Applied Ballistics® Ultralite Engine with Extensive Bullet Library with Support for G1/G7 Drag Curves
- ▲ Save up to 25 Custom Ballistic Profiles in the SIG BDX app
- ▲ Active Ballistic Profile and Environmentals Sync to Rangefinder
- ▲ Windage and Elevation Holds in MOA or MILS with Every Target Ranged
- ▲ Lightwave DSPT™ Leverages 4x/Second HyperScan™ and RangeLock Technologies for the Fastest Ranging Performance



OPTICS SYSTEM

SIG SAUER® Electro-Optics transforms hunting with the unprecedented simplicity and accuracy of BDX®. KILO® BDX rangefinders use your ballistics and Bluetooth® to illuminate the exact holdover dot in BDX equipped riflescopes. For the most accurate and ethical shot, just **CONNECT THE DOT**®.



Ballistic Data Xchange

SIERRA3BDX™

CLASSIC DIRECT IMPINGEMENT AR PLATFORM

Disguised within the form factor of a traditional riflescope lies the power of the SIG SAUER® BDX Ballistic Data Xchange. The SIERRA3BDX riflescope provides the user with an illuminated auto-holdover dot on targets when coupled with a BDX-capable KILO® rangefinder.



Also available: 4.4-14X50 / 4.5-14X44 / 3.5-10X42

SIERRA3BDX 6.5-20X52

- ▲ Provides Holdover Dot for Hunting out to 800 yards (Unlimited when Coupled to an ABX/ABE Enabled Device)
- ▲ Digital Focal Plane BDX-R1 Reticle Subtensions Correct with Zoom
- ▲ Blue LED on Power Selector Indicates when Bluetooth is Paired to KILO BDX Rangefinder
- ▲ HD Glass and Coatings for the Best Optical Quality in its Class
- ▲ Includes Throwlever

Standard Features

- ▲ Integrated BDX Ballistic Data Xchange.
- ▲ Automatic Holdover dot on a Digital Focal Plane
- ▲ Innovative KinETHIC Kinetic Energy Transfer Indicator
- ▲ Dependable Waterproof and Fog-Proof Performance (IPX-7 for Complete Immersion up to 1 Meter)
- ▲ LevelPlex with Auto LevelPlex mode

30MM MAINTUBE



SIERRA3BDX™ 4.5-14X50 SFP

- ▲ Provides holdover dot for hunting out to 800 yards
- ▲ Digital focal plane BDX-R1 reticle subtends with zoom
- ▲ Side focus allows users to remove parallax

30MM MAINTUBE



SIERRA3BDX™ 4.5-14X44 SFP

- ▲ Designed for AR and Bolt Action Platforms
- ▲ Long-Range Precision Shooting, Tactical Engagements and Long-Range Hunting
- ▲ Fiber Optic Power Indicator
- ▲ Offered in FFP with Multiple Reticle Options
- ▲ LEVELPLEX Anti-Cant System

30MM MAINTUBE



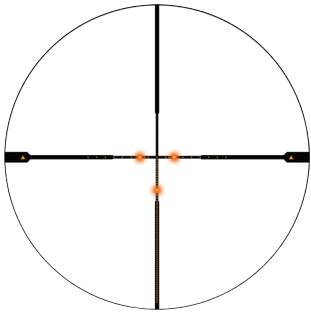
SIERRA3BDX™ 3.5-10X42 SFP

- ▲ Provides holdover dot for hunting out to 800 yards
- ▲ Digital focal plane BDX-R1 reticle subtends with zoom

30MM MAINTUBE



BLUE LED FLASHES WITH EACH RETICLE UPDATE



BDX-R1 DIGITAL BALLISTIC RETICLE

KILO BDX™

BALLISTIC RANGEFINDERS

Featuring SIG SAUER® BDX® technology, the SIG SAUER KILO binoculars are the world's most advanced laser rangefinders. When paired with a BDX-enabled product, the onboard Applied Ballistics calculator sends ballistic drop data via Bluetooth® directly to the BDX sight, providing an illuminated holdover dot and wind hold. Download the free BDX App for iOS or Android to setup ballistic profiles and synchronize custom profiles to your KILO® for exact ballistic solutions.



RANGE
DISPLAY

KIL010K-ABS HD BINOCULAR RANGEFINDER

10X42MM

- ▲ Gen II Lightwave DSP Ranging Engine with Extended Range (XR) Mode
- ▲ Onboard Environmental Sensors for Real-time Ballistic Calculations
- ▲ Drop Remote Waypoints with Basemap App
- ▲ Applied Ballistics Elite with Complete AB Bullet Database and Custom Drag Curves
- ▲ Active Matrix OLED Display Provides Graphical Real-time Ballistics Information



RANGE
DISPLAY

KIL06K HD BINOCULAR RANGEFINDER

10X42MM

- ▲ Gen II Lightwave DSP Ranging Engine with Extended Range (XR) Mode
- ▲ 5 Target Modes; First, Best, Last, Fog, Extended Range
- ▲ Advanced OLED Displays Range and Angle of Incline as Well as the Ballistic Solution
- ▲ Applied Ballistics Elite with Complete AB Bullet Database and Custom Drag Curves
- ▲ BDX 2.0 Enabled with Low Energy, Long Range Bluetooth

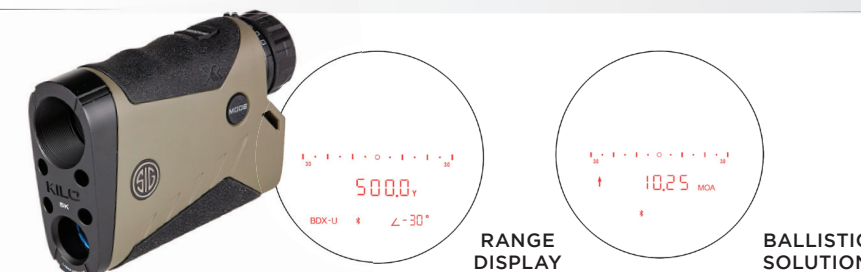


RANGE
DISPLAY

KIL08K ABS RANGEFINDER

7X25MM

- ▲ Gen II Lightwave DSP Ranging Engine with Extended Range (XR) Mode
- ▲ Onboard Environmental Sensors and Digital Compass for Real-Time Ballistic Calculations
- ▲ Drop Remote Waypoints with Basemap App
- ▲ Applied Ballistics Elite with Complete AB Bullet Database and Custom Drag Curves
- ▲ BDX 2.0 Enabled with Low Energy, Long Range Bluetooth



RANGE
DISPLAY

BALLISTIC
SOLUTION

KIL05K RANGEFINDER

7x25MM

- ▲ Gen II Lightwave DSP Ranging Engine with Extended Range (XR) Mode
- ▲ Onboard Environmental Sensors for Real-time Ballistic Calculations
- ▲ Drop Remote Waypoints with Basemap App
- ▲ Applied Ballistics Ultralight with Complete AB Bullet Database, up to 25 Custom Ballistic Profiles and 8 Preset Onboard Ballistic Groups
- ▲ BDX 2.0 Enabled with Low Energy, Long Range Bluetooth



RANGE
DISPLAY

KIL03K RANGEFINDER

6x22MM

- ▲ Revolutionary Lightwave Technology for the Fastest and Longest Distance Rangefinder Engine
- ▲ HyperScan Provides 4x Range Updates Per Second in Scan Mode while RangeLock Reports the Last Range Result when Ranging Distant Targets
- ▲ 5 target modes; First, Best, Last, Fog, and Extended Range.
- ▲ Lumatic Display Automatically Calibrates Display Brightness to Changing Ambient Light Conditions

ROMEO2™

THE NEW STANDARD OF PROFESSIONAL GRADE.

The ROMEO2 is built for use in adverse conditions. a 3 or 6 MOA, or Circle/Dot reticle with 15 brightness settings ensures rapid target engagement. The sight features a high-efficiency, point source LED emitter and molded aspheric glass lens, utilizing a high-performance red notch reflector coating for excellent brightness and light transmittance with zero distortion. The 7075 aluminum housing and ruggedized steel shrouds protect the ROMEO2 from extreme impacts and drops. The ROMEO2 maintains 25,000 hours of battery life, comes with MOTAC to automatically power the optic on and off, and shares the same footprint as the ROMEO1PRO.



Assembled in the U.S.A.

ROMEO2 1 X 30MM

- ▲ Molded Glass Aspheric Lens with High Performance Coatings for Superior Light Transmittance and Zero Distortion
- ▲ 3 or 6 MOA, or Circle/Dot Reticle with 15 Brightness Settings (12 Daylight/3 NV) for Rapid Target Engagement under a Full Range of Lighting Conditions
- ▲ TruHold™ Lockless Zeroing System that Utilizes Twin Adjustment Springs Designed to Endure Handgun Recoil and Return to Zero Shot after Shot
- ▲ 25,000+ Hour Battery Life at Medium Brightness Settings with Extreme Brightness for Outdoor Use, Plus Multiple Night Vision Levels
- ▲ Integrated Anti-Reflective Rear Sight Notch for a Full Sight Picture and Co-Witness with a Front Suppressor-Height Sight
- ▲ Spring-Loaded Side Battery Tray, Released by a Push Button that can be Activated Without Tools
- ▲ 2 Steel Shrouds Included for 3 Different Optic Configurations, Including Fully Enclosed and Sealed with a Polycarbonate Rear Window
- ▲ MOTAC™ (Motion Activated Illumination System) that Powers Up when it Senses Motion and Powers Down when it Does Not
- ▲ MAGNETAC™ (Magnetic Activation) that Automatically Turns the Optic Off when Holstered in a Compatible Holster, and Instantly Turns the Optic On when Drawn from the Holster
- ▲ D.A.R.C.™ Technology Provides Ideal Reticle Brightness and Target Clarity while using Night Vision Devices
- ▲ High-Strength 7075 CNC Aluminum Housing Ensures a Lifetime of Service
- ▲ Dependable Waterproof (IPX-7 Rated for Complete Water Submersion up to 1 Meter) Performance

1 X 30MM



Engineered to fit Most SIG SAUER Pistols with Slide cut

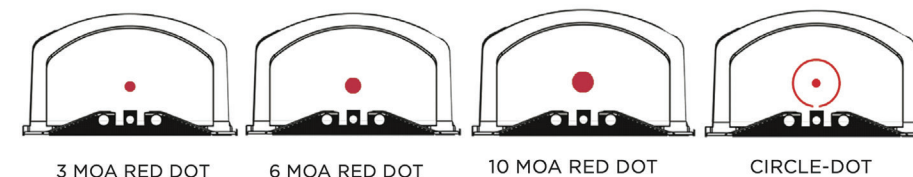


2 Steel Shrouds Included for 3 Different Optic Configurations, Including Fully Enclosed and Sealed with a Polycarbonate Rear Window



The emitter area can be fully enclosed and sealed with a polycarbonate rear window, to ensure the reticle is never interrupted

RETICLES



ROMEO4T-PRO™

MIL-SPEC COMPACT RED DOT SIGHT

Chosen by elite government and military agencies, the ROMEO4T-PRO is the ultimate Red Dot sight when fast, accurate target acquisition is a must, regardless of lighting conditions, weather conditions, or terrain. Whether it's a moving target, or a fast-breaking tactical situation at close quarters, the rugged ROMEO4T-PRO Red Dot sight can handle the job.



Available in FDE



Assembled in the U.S.A.

ROMEO4XT PRO RED DOT SIGHT

- ▲ Same High-end Optical Performance, Quad Reticle, and Durability of the ROMEO4T
- ▲ Illumination Controls on Top for Easy Access
- ▲ Dedicated Night Vision Override Switch
- ▲ MOTAC with Common AAA Battery Rated for 50,000 Hours of Runtime
- ▲ Water Proof and Fog Proof Performance

Standard Features

- ▲ Designed For Modern Pistols, Carbines, and SMG
- ▲ Quad Ballistic Circle Dot Reticle with Ballistic Holds and 10 Daytime and 2 NV Settings
- ▲ MOTAC™ (Motion Activated Illumination Systems) Powers Up When it Senses Motion and Powers Down when it does not
- ▲ Ultra Durable and Lightweight 7075 Aluminum Main Housing and Components,
- ▲ 1.41 Riser Mount with Additional Lower
- ▲ Clear, Solid and Bikini Lens Covers Included
- ▲ Complete Mil-Spec 810G Testing
- ▲ Runtime in Excess of 100,000 Hours
- ▲ 4 Different Integrated Reticle Options (Dot, Circle-Dot, Dot with Holds, Circle-Dot with Holds)



Available in Black

ROMEO4T-PRO RED DOT SIGHT

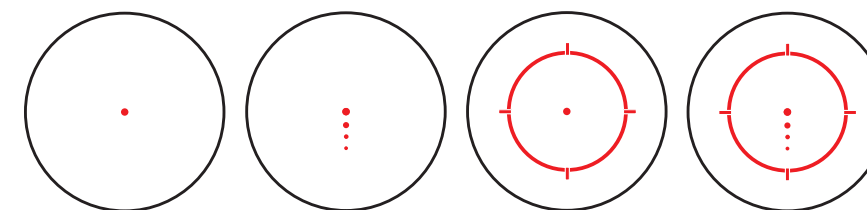
1X20MM

- ▲ Unlimited Eye-Relief
- ▲ Ultra-Efficient Red LED Illumination System
- ▲ Lightweight 7075 Aluminum Main Housing and Components
- ▲ Dependable IPX-8 Waterproof: Submersible to 20m for 2 Hours
- ▲ AAA or 2032 battery options



Shown with JULIET4 Magnifier

RETICLES

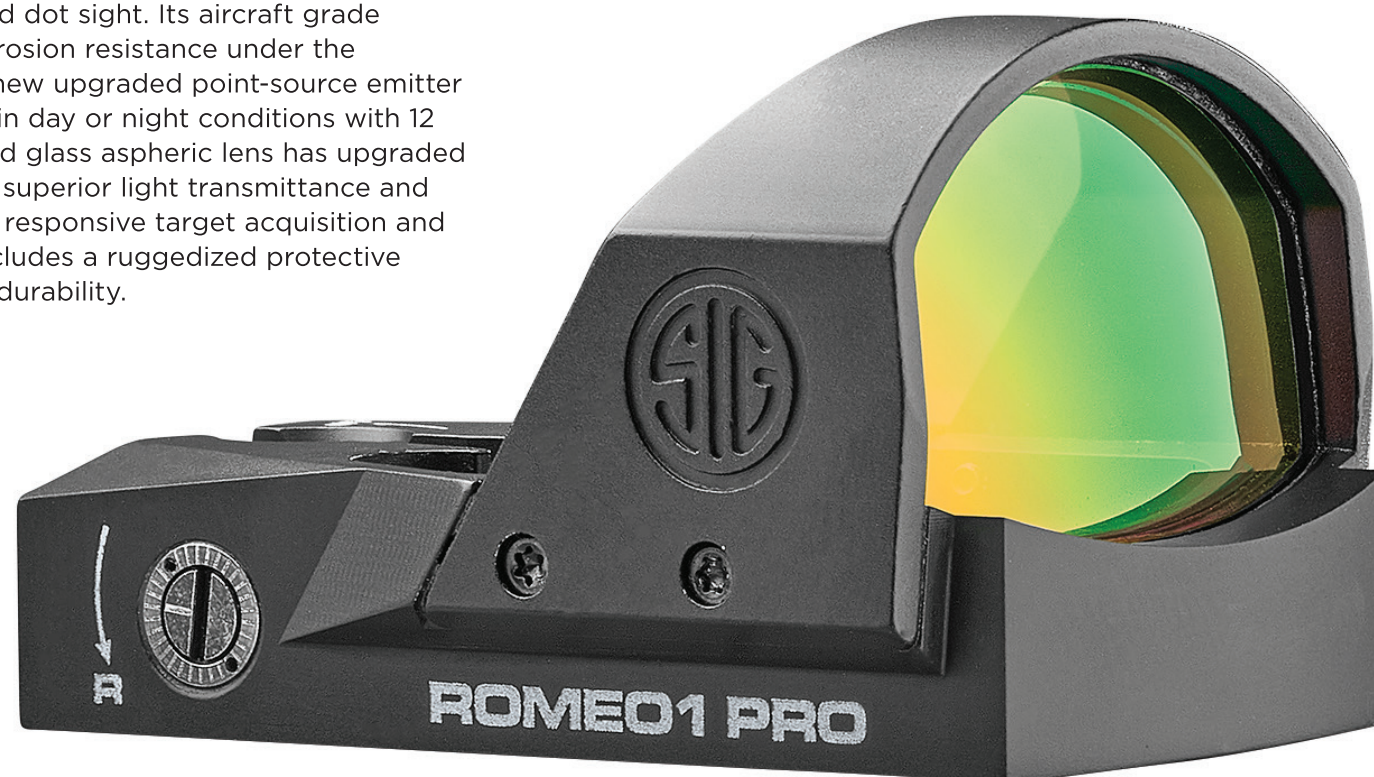


2 MOA Red Dot Ballistic Circle-Dot

ROME01PRO™

RUGGEDIZED MINI-REFLEX SIGHT

The ROME01PRO brings a new level of durability and performance to the miniature open-reflex red dot sight. Its aircraft grade aluminum housing ensures corrosion resistance under the harshest environments, and a new upgraded point-source emitter provides increased brightness in day or night conditions with 12 brightness settings. The molded glass aspheric lens has upgraded high performance coatings for superior light transmittance and zero distortion giving you fast, responsive target acquisition and accuracy. The ROME01PRO includes a ruggedized protective shroud in the box for extreme durability.



Removable Protective Shroud Included



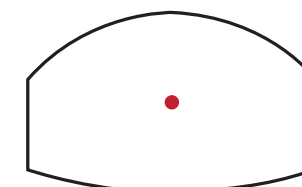
ROME01PRO 1X30MM

- ▲ Lightweight Aircraft Grade CNC Aluminum Housing
- ▲ Features a Molded Glass Aspheric Lens with High Performance Coatings for Superior Light Transmittance and Zero Distortion
- ▲ Manual Illumination Controls that Remember your Last Used Settings
- ▲ D.A.R.C.™ Technology Provides Ideal Reticle Brightness and Target Clarity while using Night Vision Devices

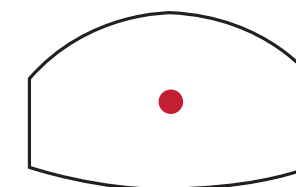
Standard Features

- ▲ Our MOTAC™ (Motion Activated Illumination) Powers Up when it Senses Motion and Powers Down when it does not, Providing Optimum Operational Safety and Enhanced Battery Life
- ▲ The Top-Loading Battery Allows for Quick Battery Replacement Without Having to Remove the Sight from the Firearm
- ▲ Dependable Waterproof (IPX-7 rated for Complete Water Immersion up to 1 meter) and Fog-Proof Performance
- ▲ Mounts Directly to all SIG SAUER® Pistols with an R2 Optics Cut
- ▲ Removable Protective Shroud Included
- ▲ Up to 20,000 hours of Battery Life, and 12 Brightness Settings (10 Daylight, 2 NV Settings)
- ▲ Available in 3 MOA and 6 MOA dot size

RETICLES



3 MOA Red Dot



6 MOA Red Dot

ROMEO-M17™

ABSOLUTE BEST PISTOL-MOUNTED RED DOT ON THE PLANET FOR PROFESSIONAL USERS OF THE MHS PISTOL.

The M17 and M18 pistols were selected by the US Military as the official sidearm, and the ROMEO-M17 is the only optic truly designed specifically for this pistol. All other optics have many disadvantages and make several compromises. The ROMEO-M17 does not. This is an American-built MIL-SPEC Red Dot truly worthy of the SIG SAUER name.



Assembled in the U.S.A.

ROMEO-M17 1X24MM

- ▲ Fully Enclosed, Sealed and Purged Optical System, for Ultimate Protection
- ▲ Mounts from Underneath the Pistol Slide, Re-using the MHS Pistol Rear Sight Block and Sight Block Screw
- ▲ 7075 Aluminum Housing
- ▲ Integrated Gas Deflector on the Front of the Housing
- ▲ Machined Anti-reflection Grooves on all Rear Surfaces for Reduced Glare
- ▲ Extremely Low Deck Height, Allowing a Full Sight Picture and Co-witness with Standard-height Sights
- ▲ Integrated Recoil Lugs in the Bottom of the Optic, Plus Front Toe Feature, for the Ultimate Optic/Pistol Lockup

Additional Features

- ▲ A High-efficiency Point Source LED Emitter, with 2 MOA dot/32 MOA Circle Reticle. Independently Selectable Reticles (Circle Only, Dot Only, or Circle/Dot Combination)
- ▲ 15 Brightness Settings, with 3 of the Settings Optimized for use with Gen 3+ NV Devices
- ▲ A Side-mounted CR2032 Battery
- ▲ Minimum Continuous Runtime of 50,000 Hours, at Medium Brightness Setting
- ▲ Windage and Elevation Adjustments have Tactile Clicks
- ▲ MOTAC (Motion Activated Illumination)
- ▲ MAGNETAC (Magnetic Activation)
- ▲ D.A.R.C. (Dark Adaptive Reticles & Coatings)
- ▲ Designed, Developed, Tested and Fully Assembled in the USA

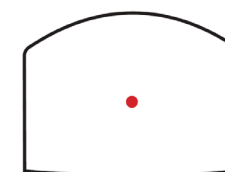


Uses the Existing M17 Rear Sight Block and Offers a Full Sight Picture of Front and Rear Iron Sights Through the Optic, Providing an Absolute Co-witness with the Reticle

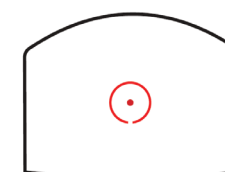


Designed specifically for the MHS-configured pistols (M17/M18)

RETICLES



2 MOA Red Dot

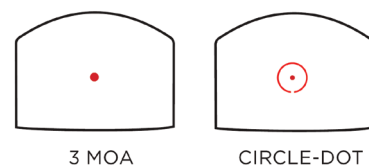


32 MOA Circle Dot

ROMEOZERO™

PREMIUM POLYMER OPEN REFLEX SIGHTS

The ROMEOZero line of open reflex sights, offer a long list of standard features and an incredible value. All models feature lightweight and durable WeaponsGrade molded polymer housings, distortion-free aspherical lenses and the latest generation of highly-efficient point-source LED emitters. The new ELITE, PRO and R models add scratch-resistant glass lenses, new reticle options, T.A.P. (Touch-Activated Programming), a Grade A Swiss SuperLuminova backup rear sight channel, and thicker carbon-infused housings for increased impact resistance.



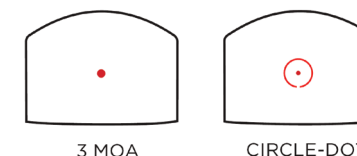
ROMEOZero ELITE

CIRCLE DOT / 10 MOA

- ▲ 1x24mm Distortion-free Scratch Resistant Aspherical Glass Lens
- ▲ Circle-Dot or 3 MOA Emitter with 8 Daylight Brightness Settings
- ▲ Structurally Enhanced Steel Shroud Included for Added Protection
- ▲ Compatible with ROMEOZero, Shield RMS-c, J Point, and Deltapoint® Pro footprint. Fits
- ▲ P365X/XL, Springfield Hellcat® OSP, and Glock® 43X/48X MOS

Shared Features (ELITE, PRO, R)

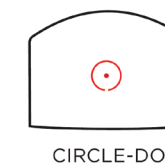
- ▲ 8 vivid, User Configurable Daytime Illumination Levels
- ▲ MOTACT™ (Motion Activated Illumination System) that Powers up when it Senses Motion and Powers Down when it Does Not
- ▲ Highly Efficient, Point Source LED Emitter for a Crisp Reticle that is 8 Times more Efficient than Conventional Red Dots
- ▲ Distortion-free Scratch Resistant Aspherical Glass Lens
- ▲ Molded Rear Backup Sight Notch with Grade A Swiss SuperLuminova Channel for Low-light Situations
- ▲ T.A.P. (Touch-Activated Programming) and Buttonactivated Brightness and Reticle Selection Modes
- ▲ Carbon-Infused WeaponsGrade® Ultralight Polymer Housing Provides Increased Shock and Drop Protection



ROMEOZero PRO

CIRCLE DOT / 3 MOA

- ▲ Large 30mm Glass Aspherical Lens with Zero Distortion
- ▲ Circle-Red Dot, or 3 MOA Emitter Options with 8 Daylight Brightness Settings
- ▲ Compatible with all SIG PRO/R2 Slide Cuts, and all Deltapoint® Pro Footprints



ROMEOZero R

CIRCLE DOT / 10 MOA

- ▲ Large 30mm Glass Aspherical Lens with Zero Distortion
- ▲ Circle-Dot Emitter Options with 8 Daylight Brightness Settings
- ▲ Compatible with all Trijicon® RMR Footprints



ROMEOZero Elite



ROMEOZero Pro



ROMEOZero R

FOXTROT2R™

WEAPON MOUNTED WHITE LIGHT

The FOXTROT series of pistol lights provide bright, crisp, white light and come ready to mount on your SIG SAUER® pistol.



FOXTROT2R

700 LUMENS

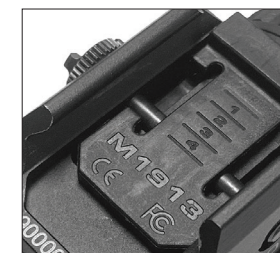
- ▲ 20,000 Candela
- ▲ 1.5 Hours of Runtime
- ▲ The FOXTROT2R Ships With Two Rail Interface Inserts. The M1913 Insert Is Designed to fit MIL-STD 1913 Rails. The OTHER Insert Is eant For Pistols with non Mil-STD 1913 Rail Designs
- ▲ Ambidextrous Activation Paddles with Momentary Mode, Latching Mode, and Threshold Mode
- ▲ Programmable Activation, 3 Separate Modes Chosen by the User
- ▲ 4-Position Sliding Rail Inserts For a Customizable Fit
- ▲ FlexCore Allows The Light To Be Powered by Either the Included Rechargeable 16340 Battery or Standard CR123A Battery, Giving you the Flexibility to Choose the Best Power Source for your Needs



700 Lumens / 20,000 Candela



Ambidextrous Activation Paddles with Momentary, Latching, and Threshold Mode



The FOXTROT2R Ships With Two Rail Interface Inserts. The M1913 Insert Is Designed To Fit MIL-STD 1913 Rails. The OTHER Insert Is Meant For Pistols With Non Mil-STD 1913 Rail Designs.



Compatible with all compact & full-size SIG SAUER pistols including:

P320 Compact, XCOMPACT, XCARRY, XFIVE, Full-size, Carry (not Sub-Compact) M17, M18, P226 & MK-25 (with accessory rail), P229 (with accessory rail), P220 (with accessory rail) SP2022 (with accessory rail), 1911 (with accessory rail) MCX, MPX, 516, 716, M400 with Picatinny rail

Does not fit:

P365, P365X, or P365XL
LIMA GRIP MODULES

ROME08T™

MIL-SPEC RED DOT SIGHT

With its wide field of view and forgiving eye-box, the battle hardened ROME08T is ideal for rapid target engagement in any environment.



ROME08T 1X38MM

- ▲ Unlimited Eye-Relief
- ▲ Ultra-Efficient Red LED Illumination System
- ▲ Dependable IPX-8 Waterproof: Submersible to 20m for 30 Minutes
- ▲ Lightweight 7075 Aluminum Main Housing and Components
- ▲ Assembled in the U.S.A.

Standard Features

- ▲ High Performance Coatings for Excellent Light Transmittance and Red Dot Contrast in all Situations
- ▲ Quad Ballistic Circle Dot reticle with ballistic holds and 10 Daytime and 2 NV Settings
- ▲ MOTACT™ (Motion Activated Illumination Systems) Powers Up When it Senses Motion and Powers Down when it does not
- ▲ 1.53" Optical Center Height for Optical Device Compatibility
- ▲ 38mm Rectangular Viewing Window for Unmatched Situational Awareness and Target Identification
- ▲ .5MOA Adjustments for Zeroing, with Ballistic Drops Built into the Reticle for Distance Shooting without Dialing
- ▲ 1/2" Hex Bolt Provides Retention of Zero During Extreme Conditions
- ▲ CR123A Battery Provides 100,000 Hours at High-Brightness Setting



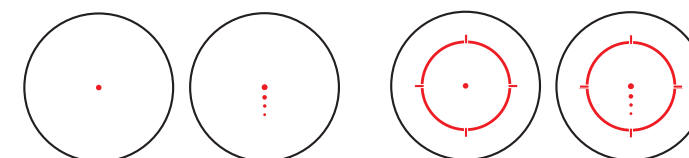
Assembled in the U.S.A.



Available in FDE



RETICLES



2 MOA Red Dot Ballistic Circle Dot

ROMEO9T™

MIL-SPEC DOT SIGHT

Designed especially for night vision users, the new Romeo 9T optic users a unique, proprietary design that does not emit any energy from the front of the optic. This allows users to engage targets passively without using active IR and maintaining a reduced signature. The ROMEO 9T has two reticles that are separately adjustable and can be toggled back and forth or be used with both on at the same time. A red 1/65 MOA circle dot and a green 2.5 MOA dot allow users to configure optimal setting for multiple different applications. The ROMEO 9T has 15 brightness settings (3 night vision and 12 daylight) and has a night vision override button that allows for quick transfer between bright and dim settings. The ROMEO 9T is perfect for:

Sub/Super ammunition
Training/duty ammunition
UTM or SIM/duty ammunition
Suppressed/unsuppressed
Caliber changes



Assembled in the U.S.A.

ROMEO9T 1X38MM

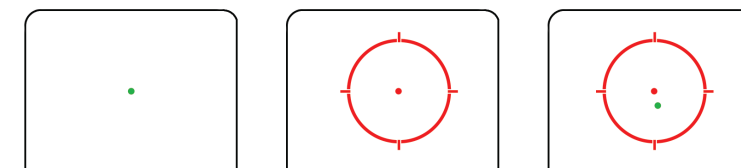
- ▲ Dual Independently Zeroed Emitters
- ▲ Designed and Tuned for Pasive NV Performance, Including NV Override Control
- ▲ Proprietary Optical Design Mitigates Downrange Signature
- ▲ 50,000 Hour Runtime with 10 Hour Reserve
- ▲ Titanium Shroud and Mounting Hardware
- ▲ IPX8 Fogproof and Waterproof Performance
- ▲ Assembled in the USA



Available in FDE



RETICLES



Red and Green dot. Dual Independently zeroed emitters

JULIET®

MAGNIFIERS

Easily transition between close quarters and medium range targets with a flip of our JULIET magnifier. The JULIET features a quick-release PowerCam mount that flips easily to one side when not in use. Built-in recoil lugs ensure zero hold even after removing and reinstalling.



Assembled in the U.S.A.

JULIET6™ 6X24MM

- ▲ Designed for Carbines and SMG
- ▲ Power and Versatility of a 1-6X Scope, in a Modular System that is Lighter Weight
- ▲ Adjustable Base Mount Provides Customization for Red Dot Sight Combination
- ▲ Assembled in the U.S.A.

Standard Features

- ▲ Quick Release Mount with Built-In Recoil Lugs for a Repeatable Zero
- ▲ PowerCam 90° Mount Pivots to the Side When not Needed
- ▲ Adjustable Height Using Included Spacers
- ▲ Aerospace Grade 6061 Aluminum Housing Ensures a Lifetime of Reliable Service
- ▲ Waterproof Rated IPX-8 (20 Meters for 1 Hour)



JULIET4™ 4X24MM

- ▲ Designed for Carbines and SMG
- ▲ Adjustable Base Mount Provides Customization for Red Dot Sight Combination
- ▲ STEALTH ID™ Trapezoidal Design Breaks up the Optic Shape and Visibility Profile
- ▲ Power and Versatility of a 1-4X Scope, in a Modular System that is a Lighter Weight
- ▲ Adjustable Base Mount Provides Customization for Red Dot Sight Combination
- ▲ Assembled in the U.S.A.



JULIET3™ 3X24MM

- ▲ Designed for Carbines and SMG
- ▲ Adjustable Base Mount Provides Customization for Red Dot Sight Combination
- ▲ STEALTH ID™ Trapezoidal Design Breaks up the Optic Shape and Visibility Profile
- ▲ Power and Versatility of a 1-3x Scope, in a Modular System That is a Lighter Weight
- ▲ Adjustable base Mount Provides Customization for Red Dot Sight Combination
- ▲ Assembled in the U.S.A.



PowerCam 90° Mount



Quick Release Mount with Built-in Recoil Lugs

ALPHA™

TACTICAL SCOPE MOUNTS

Our proprietary steel alloy ALPHA3 and ALPHA4 scope mounts are machined with an exactness that is both strong yet ductile that allows our rings to form around a riflescope, yet will not damage scope under proper installation. The steel rings are epoxy powder coated to prevent oxidation and resist gun oils, cleaning solutions, and outdoor exposure.



Available in FDE



Assembled in the U.S.A.

ALPHA4 SCOPE MOUNT

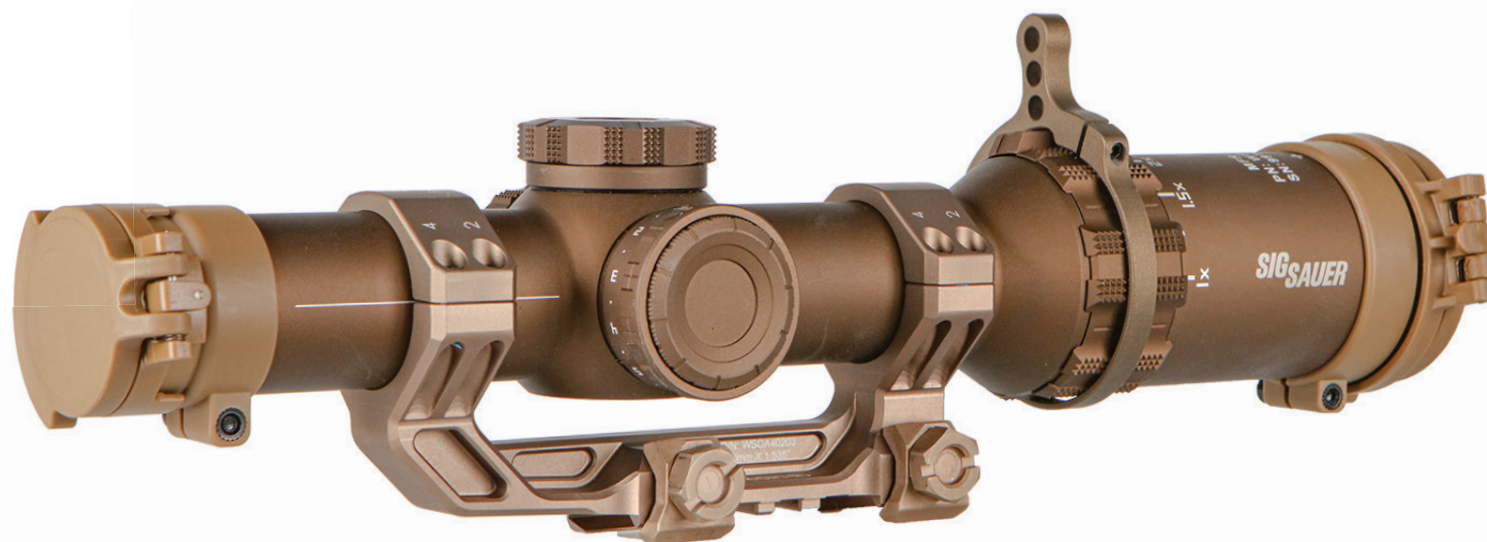
- ▲ 1913 Mounting Interface Style Clamps
- ▲ Machined from 7075 & 6061-T6 Aluminum with Steel Mounting Hardware
- ▲ Multiple Diameter Sizes and Heights Available from; 30mm / 1.375"
- ▲ Selected by DOD for DVO
- ▲ Available in FDE



Assembled in the U.S.A.

ALPHA3 SCOPE MOUNT

- ▲ STANG Mounting Interface Style Clamps
- ▲ Machined from 6061-T6 Aluminum with Steel Mounting Hardware
- ▲ Multiple Diameter Sizes and Heights Available from; 30mm (1.535"), 30mm - 20 MOA, (1.535") 34mm (1.535"), 34mm - 20 MOA (1.535")



NEXT GENERATION

REVOLUTIONARY HYBRID AMMUNITION

Developed for the U.S. Military's Next Generation Weapons System, the new SIG FURY™ Hybrid-Case ammunition outperforms standard ammunition in similar calibers, with greater velocity, decreased bullet drop and increased energy on target. SIG FURY hybrid-case ammunition, the next generation of ammunition is here.



FEATURES

1. Projectiles manufactured to exacting standards for consistency and accuracy
2. Hybrid brass and stainless steel shell case allows for higher pressure loading for increased velocity from short barrels



FURY



CALIBER
6.5 CREEDMOOR
HYBRID



CALIBER
6.8X51 HYBRID



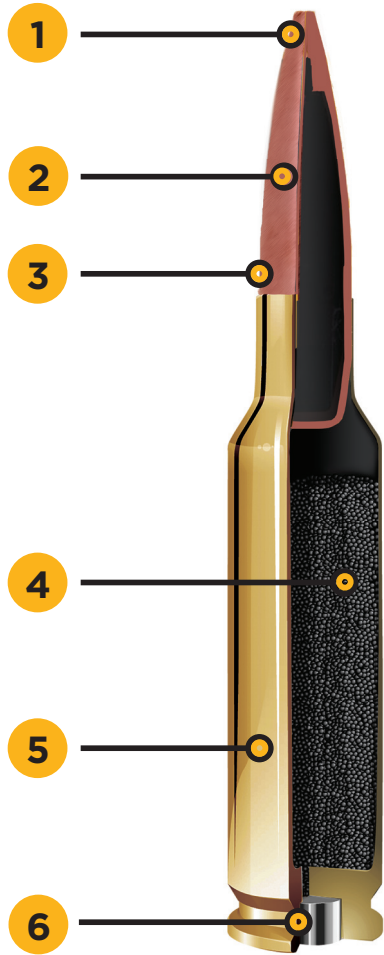
CALIBER
7.62X51 NATO
HYBRID

RIFLE AMMO

ELITE PERFORMANCE AMMUNITION

PRECISION MATCH GRADE RIFLE CARTRIDGES

SIG Match Grade rifle rounds are engineered to excel in today’s precision auto-loading platforms, as well as bolt-action rifles. Utilizing optimized shell case metallurgy and premium primers, each round is precision-loaded using state-of-the-art, electromechanical monitoring for geometric conformity, and all are 100% inspected.



FEATURES

- 1. Hollow Point Designed to Maximize BC
- 2. Thin Jacket Design for Precise Concentricity
- 3. Bullet Weights are Held within +/- 0.3 Grains
- 4. Temperature-Stable Propellants
- 5. Brass Cases are 100% Inspected and Lot Controlled
- 6. Industry Leading Primers are Unmatched in Power and Performance

CALIBER	BULLET WEIGHT (gr)	BULLET STYLE	VELOCITY IN FPS					ENERGY IN FT-LBS						TRAJECTORY IN INCHES				
			MUZZLE	100 YDS	200 YDS	300 YDS	400 YDS	500 YDS	MUZZLE	100 YDS	200 YDS	300 YDS	400 YDS	500 YDS	100 YDS	200 YDS	300 YDS	400 YDS

SIG MATCH RIFLE

5.56 NATO	77	OTM	2750	2499	2262	2038	1828	1633	1293	1068	875	710	571	456	0.0	-4.1	-15.0	-34.3	-64.1
308 WIN	168	OTM	2700	2505	2318	2138	1967	1805	2719	2340	2003	1705	1443	1215	0.0	-4.1	-14.6	-32.8	-59.9
308 WIN	175	OTM	2600	2424	2256	2094	1939	1791	2626	2284	1977	1703	1460	1246	0.0	-2.9	-12.7	-30.4	-57.4

RIFLE AMMO

PRECISION 300 BLACKOUT

Engineered with the SIG MCX® mission configurable rifle in mind.

SIG 300BLK Subsonic 220gr

Propellant chemistry was optimized to produce the ideal down-bore pressure for cycling both piston and gas-driven platforms. SIG 300BLK Subsonic rounds minimize recoil, sound, and muzzle flash, and Increase mass for maximum energy on target.

SIG 300BLK Supersonic 125gr

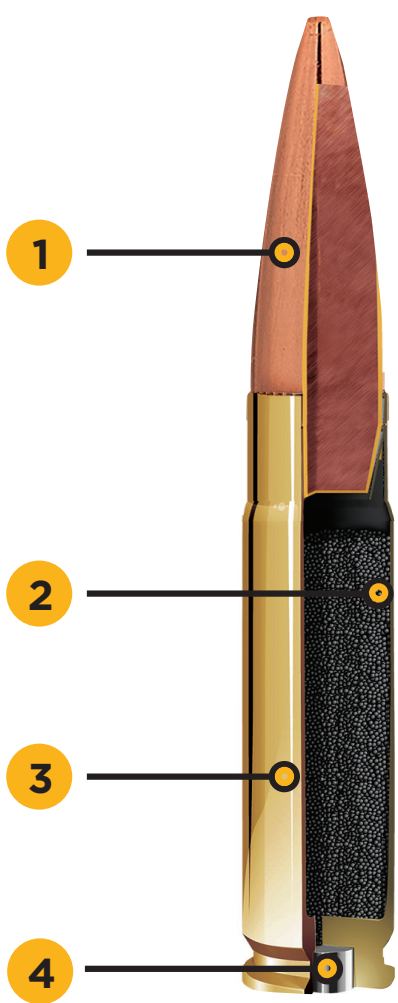
The SIG supersonic FMJ training ammo is the Ideal mix of reliability and economy. Ballistically match with our duty ammo allows for easy transition between the range and the field

SIG 300BLK Subsonic 125gr

The ultimate balance of terminal performance, reliability, and accuracy for suppressed systems. The SIG 194gr duty design leverages a decade battlefield feedback to provide the new standard subsonic performance.

SIG 300BLK Supersonic 110gr Duty Round

Utilizing the legendary 110 gr TTSX™ projective, the SIG duty loading has optimized the terminal performance out of short barrel systems.



FEATURES

- 1. Solid Copper Projectile Optimized from Short Barreled Rifles (220gr Subsonic, 125gr Supersonic, 125gr Subsonic)
- 2. Temperature-Stable Propellants
- 3. Brass Cases are 100% Inspected and Lot Controlled
- 4. Industry Leading Primers are Unmatched in Power and Performance

CALIBER	BULLET WEIGHT (gr)	BALLISTIC COEFFICIENT (G1)	VELOCITY IN FPS FROM A 9" BARREL				ENERGY IN FT. LBS				TRAJECTORY IN INCHES			
			MUZZLE	25 YDS	50 YDS	100 YDS	MUZZLE	25 YDS	50 YDS	100 YDS	MUZZLE	25 YDS	50 YDS	100 YDS
SIG 300BLK														
300BLK SUBSONIC DUTY	194	0.530	1000	992	982	964	423	415	407	392	0	+35	0	-7.50
300BLK SUBSONIC TRAINING	220	0.608	1000	993	984	969	490	481	473	458	0	+35	0	-7.50

CALIBER	BULLET WEIGHT (gr)	BALLISTIC COEFFICIENT (G1)	VELOCITY IN FPS FROM A 9" BARREL				ENERGY IN FT. LBS				TRAJECTORY IN INCHES			
			MUZZLE	25 YDS	50 YDS	100 YDS	MUZZLE	25 YDS	50 YDS	100 YDS	MUZZLE	25 YDS	50 YDS	100 YDS
SIG 300BLK														
300BLK SUPERSONIC DUTY	110	0.289	2150	1888	1641	1422	1139	871	657	494	-1.5	0	-8.3	-29.6
300BLK SUPERSONIC TRAINING	125	0.264	2010	1728	1478	1269	1121	828	606	447	-1.5	0	-10.2	-36.5

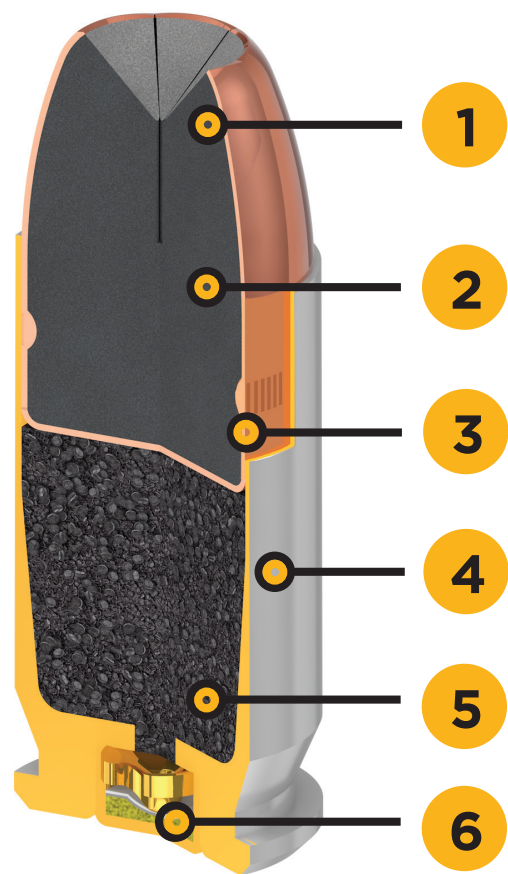
PISTOL AMMO

ELITE PERFORMANCE AMMUNITION

SIG V-CROWN

JACKETED HOLLOW POINT PISTOL CARTRIDGES

SIG V-CROWN® defensive rounds combine perfected material specifications and fine-tuned design innovations. The stacked hollow point cavity delivers exceptional on-target energy with maximum weight retention and optimal expansion to provide the ultimate in stopping power.



FEATURES

- 1. V-Shaped Jacket with Skives and Scores to Provide Controlled, Uniform Expansion
- 2. Patented Stacked Hollow Point Bullet Design with Additional Hollow Point Cavity
- 3. Unique Toothed Cannellure Ensures Maximum Weight Retention and Terminal Expansion
- 4. Coated Nickel Cases Provide Enhanced Lubricity, Superior Corrosion Resistance, and Reliable Feeding and Extraction
- 5. Low Flash Propellant
- 6. Consistent Primers

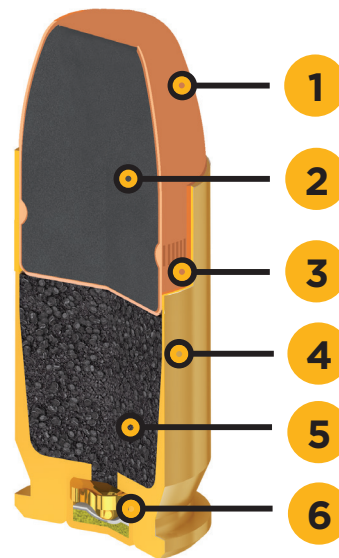


9MM LUGER
115 grain
124 grain
147 grain

SIG FMJ

FULL METAL JACKET PISTOL CARTRIDGES

Engineered to match SIG V-Crown™ ballistics for a seamless transition from training to carry ammunition. SIG FMJ delivers round after round of affordable, premium-level performance. Featuring dependable primers, SIG FMJ durable copper-jacketed bullets match the point-of-impact, recoil, and energy of the SIG V-Crown loads.



FEATURES

- 1. Full Metal Jacket Projectile Ballistically Matched to Ensure the Same Point-of-Impact as Elite Carry Ammo
- 2. Lead Core
- 3. Bullet Weight and Load Spec's Matched to Elite Carry to Ensure Consistent Felt Recoil and Barrel Rise
- 4. Brass Cartridge Cases
- 5. Clean Burning Powders
- 6. Consistent Primers

FEATURES

- ▲ Brass Cartridge Cases
- ▲ Fully Reloadable
- ▲ Dependable Primers
- ▲ Made in the U.S.A.
- ▲ Clean Burning Powders
- ▲ Manufactured to SAAMI Standards



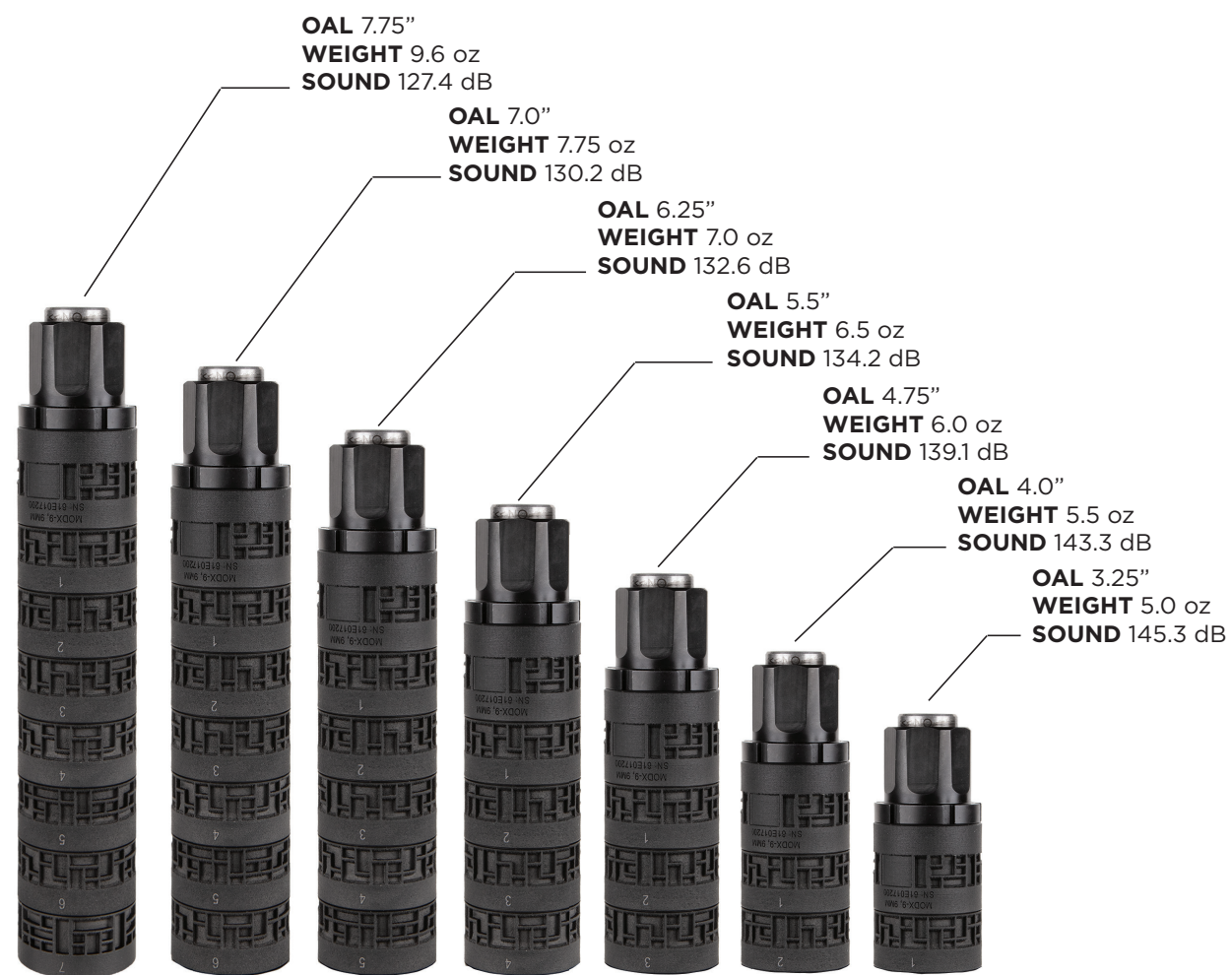
9MM LUGER
115 grain
124 grain
147 grain

CALIBER	BULLET WEIGHT (gr)	BULLET STYLE	VELOCITY IN FPS				ENERGY IN FT-LBS				TRAJECTORY IN INCHES		
			MUZZLE	25 YDS	50 YDS	100 YDS	MUZZLE	25 YDS	50 YDS	100 YDS	25 YDS	50 YDS	100 YDS
SIG V-CROWN													
9MM LUGER	115	JHP	1185	1126	1076	1000	359	324	296	255	0.6	0.0	-7.0
	124		1165	1102	1051	973	374	334	304	261	0.6	0.0	-7.3
	147		985	958	934	891	317	300	285	259	0.9	0.0	-9.5
SIG FMJ													
9MM LUGER	115	FMJ	1185	1125	1076	999	359	323	296	255	0.6	0.0	-7.0
	124	FMJ	1165	1111	1065	993	374	340	312	272	0.6	0.0	-7.1
	147	FMJ	985	960	936	895	317	301	286	261	0.9	0.0	-9.4

MODX PISTOL

SUPPRESSORS

The MODX pistol suppressor line from SIG SAUER® features completely modular and configurable titanium baffles for the ultimate in lightweight performance that allows the user to personalize their suppressor for overall length, weight, and sound. The MODX-9 and MODX-45 provide class-leading sound performance and can be easily disassembled and reconfigured with fewer baffles when your priority is size over sound. The MODX suppressors feature 21 points of impact adjustment and come with a fixed barrel spacer for carbine use. Each MODX suppressor includes the most popular inch and metric piston for its given caliber.



MODX-9 P226 Using 147gr

MODX-9 PISTOL

- ▲ Segmented Titanium 3D Printed
- ▲ Includes Two Pistons (1/2"x28tpi& M13.5x1LH) and Fixed Barrel Spacer
- ▲ Multi-Caliber Capable with Accessory Pistons

9MM



SLX RIFLE

SUPPRESSORS

The SLX series of rifle suppressors feature the new Clutch-LOK QD mounting system which is easy to use, repeatable, and extremely durable. The internal multi-flow path within the SLX suppressors allows gasses to exhaust at a faster rate than traditional baffle-style suppressors. This results in 70-80% less toxic fumes flowing back through the ejection port into the shooter’s face. The SLX series is a performance-based suppressor designed for use with supersonic ammunition and ideal for users focused on flash reduction and lower toxic fumes. The new low-tox SLX suppressors deliver a superior shooting experience, unlike any other suppressor.

The internal multi-flow path of the SLX with low resistance exhausts gases at a faster rate than traditional baffles. SLX features 70-80% less PPM than traditional baffle suppressors.



SLX762-QD

- ▲ 7.62mm
- ▲ 5/8x24 Muzzle Device Included
- ▲ Inconel and Stainless Steel Construction
- ▲ Cross Flow Design to Reduce Blowback
- ▲ 7.4" L x 1.09" W

7.62 NATO



7.62 NATO

SLX762 DIRECT THREAD

- ▲ Inconel and Stainless Steel Construction
- ▲ Cross Flow Design to Reduce Blowback
- ▲ Rated for 300 Win Mag



7.62 NATO

SLX762C QD

- ▲ 5/8x24 Muzzle Device Included
- ▲ Inconel and Stainless Steel Construction
- ▲ Cross Flow Design to Reduce Blowback
- ▲ Rated for 300 Win Mag



7.62 NATO

SLX762C DIRECT THREAD

- ▲ Inconel and Stainless Steel Construction
- ▲ Cross Flow Design to Reduce Blowback
- ▲ Rated for 300 Win Mag



5.56 NATO

SLX556 DIRECT THREAD

- ▲ Inconel and Stainless Steel Construction
- ▲ Cross Flow Design to Reduce Blowback



5.56 NATO

SLX556 QD

- ▲ 1/2x28 Muzzle Device Included
- ▲ Inconel and Stainless Steel Construction
- ▲ Cross Flow Design to Reduce Blowback



5.56 NATO

SLX556C DIRECT THREAD

- ▲ Inconel and Stainless Steel Construction
- ▲ Cross Flow Design to Reduce Blowback



5.56 NATO

SLX556C QD

- ▲ 1/2x28 Muzzle Device Included
- ▲ Inconel and Stainless Steel Construction
- ▲ Cross Flow Design to Reduce Blowback

	CALIBER	LENGTH	WIDTH	WEIGHT	MATERIAL	
SLX556	5.56 NATO	7.4 in / 188 mm	1.67 in / 42 mm	1.09 lbs / 17.4 oz	Inconel and Stainless Steel	
SLX556-QD	5.56 NATO	7.4 in / 188 mm	1.67 in / 42 mm	1.2 lbs / 19.2 oz	Inconel and Stainless Steel	
SLX556C	5.56 NATO	5.2 in / 132 mm	1.67 in / 42 mm	0.79 lbs / 12.6 oz	Inconel and Stainless Steel	
SLX556C-QD	5.56 NATO	5.2 in / 132 mm	1.67 in / 42 mm	0.91 lbs / 14.6 oz	Inconel and Stainless Steel	
SLX762	7.62 NATO	7.4 in / 188 mm	1.67 in / 42 mm	1.09 lbs / 17.4 oz	Inconel and Stainless Steel	
SLX762-QD	7.62 NATO	7.4 in / 188 mm	1.67 in / 42 mm	1.2 lbs / 19.2 oz	Inconel and Stainless Steel	
SLX762C	7.62 NATO	5.2 in / 132 mm	1.67 in / 42 mm	0.79 lbs / 12.6 oz	Inconel and Stainless Steel	
SLX762C-QD	7.62 NATO	5.2 in / 132 mm	1.67 in / 42 mm	0.91 lbs / 14.6 oz	Inconel and Stainless Steel	

SLH RIFLE

SUPPRESSORS

SIG SAUER is proud to introduce the new SLX and SLH series of suppressors. Both the SLX and SLH were developed to meet the demands of the U.S. military, and are designed to deliver cutting-edge performance.

The SLH series of rifle suppressors also features the new Clutch-LOK QD mounting system, and an internal multi-flow path with a focus on sound reduction, while also reducing up to 50% of the toxic fumes venting through the ejection port. The SLH is ideal for users that use both supersonic and subsonic ammunition, and are optimized for sound reduction.



SLH762-QD

- ▲ 7.62mm
- ▲ 5/8x24 Muzzle Device Included
- ▲ Inconel and Stainless Steel Construction
- ▲ Cross Flow Design to Reduce Blowback
- ▲ 7.4" L x 1.09" W

7.62 NATO



.300 BLK

SLH300 DIRECT THREAD

- ▲ Inconel and Stainless Steel Construction
- ▲ Cross Flow Design to Reduce Blowback
- ▲ Optimized for 300BLK but Rated for 300 Win Mag



.300 BLK

SLH300 QD

- ▲ 5/8x24 Muzzle Device Included
- ▲ Inconel and Stainless Steel Construction
- ▲ Cross Flow Design to Reduce Blowback
- ▲ Optimized for 300BLK but Rated for 300 Win Mag



7.62 NATO

SLH762 DIRECT THREAD

- ▲ Inconel and Stainless Steel Construction
- ▲ Cross Flow Design to Reduce Blowback
- ▲ Rated for 300 Win Mag



7.62 NATO

SLH762TI QD

- ▲ 5/8x24 Muzzle Device Included
- ▲ Titanium Construction
- ▲ Cross Flow Design to Reduce Blowback
- ▲ Rated for 300 Win Mag



7.62 NATO

SLH762C DIRECT THREAD

- ▲ Inconel and Stainless Steel Construction
- ▲ Cross Flow Design to Reduce Blowback
- ▲ Rated for 300 Win Mag



7.62 NATO

SLH762TIC QD

- ▲ 1/2x28 Muzzle Device Included
- ▲ Titanium Construction
- ▲ Cross Flow Design to Reduce Blowback
- ▲ Rated for 300 Win Mag

	CALIBER	LENGTH	WIDTH	WEIGHT	MATERIAL
SLH300	300 BLK	8.93 in / 227 mm	1.67 in / 42 mm	1.4 lbs / 22.4 oz	Inconel and Stainless Steel
SLH300-QD	300 BLK	8.93 in / 227 mm	1.67 in / 42 mm	1.52 lbs / 24.3 oz	Inconel and Stainless Steel
SLH300TI	300 BLK	8.93 in / 227 mm	1.67 in / 42 mm	0.88 lbs / 14.1 oz	Titanium
SLH300TI-QD	300 BLK	8.93 in / 227 mm	1.67 in / 42 mm	1.0 lbs / 16 oz	Titanium
SLH762	7.62 NATO	7.5 in / 191 mm	1.67 in / 42 mm	1.2 lbs / 19.2 oz	Inconel and Stainless Steel
SLH762-QD	7.62 NATO	7.5 in / 191 mm	1.67 in / 42 mm	1.32 lbs / 21.1 oz	Inconel and Stainless Steel
SLH762TI	7.62 NATO	7.5 in / 191 mm	1.67 in / 42 mm	0.75 lbs / 12 oz	Titanium
SLH762TI-QD	7.62 NATO	7.5 in / 191 mm	1.67 in / 42 mm	0.87 lbs / 13.9 oz	Titanium
SLH762C	7.62 NATO	5.3 in / 135 mm	1.67 in / 42 mm	0.83 lbs / 13.3 oz	Inconel and Stainless Steel
SLH762C-QD	7.62 NATO	5.3 in / 135 mm	1.67 in / 42 mm	0.96 lbs / 15.4 oz	Inconel and Stainless Steel
SLH762TIC	7.62 NATO	5.3 in / 135 mm	1.67 in / 42 mm	0.55 lbs / 8.8 oz	Titanium
SLH762TIC-QD	7.62 NATO	5.3 in / 135 mm	1.67 in / 42 mm	0.67 lbs / 10.7 oz	Titanium

TRAINING

SIG SAUER® TRAINING

SIG AIR ProForce products are replicas of their centerfire counterparts in look, balance, handling characteristics, and are engineered to SIG standards for precision, accuracy, and reliability.

PROFORCE™ AIRSOFT TRAINING



PROFORCE VIRTUS MCX AIRSOFT

- ▲ Similar in Look and Feel to the SIG MCX Virtus SBR Firearm
- ▲ Requires 11.1V Lithium Ion Battery (Battery not Included)
- ▲ Telescoping Stock
- ▲ Fully Automatic AEG (Automatic Electric Gun)
- ▲ 120rd Magazine, for Best Results use 6mm, .20gr Polymer Biodegradable BBs
- ▲ Adjustable Hop-up
- ▲ Up to 370 FPS

.20GR



All Metal Receiver
and M-Lok Handguard Construction
for Accurate Weight and Handling

9mm



P320-M17 AIRSOFT

- ▲ Similar in look and feel to the U.S. Army Issued P320- M17
- ▲ Full Blowback Metal Slide
- ▲ Powered by 12g CO2 or Green Gas, Magazines for Green Gas and CO2 are Interchangeable in the same Pistol
- ▲ Drop Free Magazine
- ▲ Field Strips Like the U.S. Army M17 Pistol
- ▲ 21rd Magazine, for Best Results use 6mm, .20gr Polymer Biodegradable BBs
- ▲ Optional Optic Plate mount for Red Dot Sights
- ▲ Up to 320 FPS w/Green Gas and 410 FPS w/ CO2

9mm



P320-M18 AIRSOFT

- ▲ Similar in look and feel to the U.S. Marines Issued P320- M18
- ▲ Full Blowback Metal Slide
- ▲ Powered by 12g CO2 or Green Gas, Magazines for Green Gas and CO2 are Interchangeable in the same Pistol
- ▲ Drop Free Magazine
- ▲ Field Strips Like the U.S. Army M17 Pistol
- ▲ 21rd Magazine, for Best Results use 6mm, .20gr Polymer Biodegradable BBs
- ▲ Optional Optic Plate mount for Red Dot Sights
- ▲ Up to 320 FPS w/Green Gas and 410 FPS w/ CO2

9mm



P226 AIRSOFT

- ▲ Full Blowback Metal Slide
- ▲ Full Metal Slide, Frame, Barrel and Magazine
- ▲ Powered by 12g CO2 or Green Gas, Magazines for Green Gas and CO2 are Interchangeable in the same Pistol
- ▲ 1:1 Replica of the SIG SAUER P226 Pistol
- ▲ 25rd Magazine, for Best Results use 6mm, .20gr Polymer Biodegradable BBs
- ▲ Fixed Front and Rear White Dot Sights
- ▲ Up to 320 FPS w/Green Gas and 410 FPS w/ CO2

9mm



P229 AIRSOFT

- ▲ Full Blowback Metal Slide
- ▲ Full Metal Slide, Frame, Barrel and Magazine
- ▲ Powered by 12g CO2 or Green Gas, Magazines for Green Gas and CO2 are Interchangeable in the same Pistol
- ▲ 1:1 Replica of the SIG SAUER P229 Pistol
- ▲ 25rd Magazine, for Best Results use 6mm, .20gr Polymer Biodegradable BBs
- ▲ Fixed Front and Rear White Dot Sights
- ▲ Up to 320 FPS w/Green Gas and 410 FPS w/ CO2

Selected by the U.S.
Coast Guard for training.

TRAINING

SIG SAUER ACADEMY



WE'LL MAKE YOU A BETTER SHOOTER. GUARANTEED

With a team of world class instructors, from a broad range of backgrounds, the SIG SAUER Academy provides the finest firearms and tactics training available today. Using our objective and performance-based training methods we can help develop and expand the abilities of virtually any level of firearms user.

Our expert staff of instructors have the unique ability and experience that allows them to train all types of firearms users, from beginners to experts, from civilians to elite military, and law enforcement agencies. The SIG SAUER Academy is committed to delivering the best, most realistic, fundamentally sound training experience possible. We'll make you a better shooter. Guaranteed.

For course descriptions, schedules, and more, visit sigsaueracademy.com

FACILITIES

The SIG SAUER AcademySM offers 140 acres of state-of-the-art indoor and outdoor training facilities. We have developed a variety of ranges and infrastructure allowing us to create almost any type of environment and to prepare for practically any situation. Facilities include:

- 26 Different Live Fire Ranges
- 1,000 Yard Rifle Range
- 2 Live Fire Shoothouses
- Indoor Pistol and Rifle Ranges
- 270 Degree Range
- Tactical Training with Breaching Capabilities
- Obstacle Course
- Vehicle Defense Range

Additionally, the SIG SAUER Academy is home to the **factory-direct SIG SAUER Pro Shop**, displaying the entire line of SIG SAUER pistols, rifles, electro-optics, suppressors, ammunition, air guns, accessories, and apparel.

PRIVATE AND MOBILE TRAINING

The SIG SAUER Academy is dedicated to providing the highest level of training available, tailored to fit any individual or organized group needs. We provide customized private classes at our Academy, or we can take our expert training to a private location upon request.

Private classes for corporate and executive clients, as well as government agencies and private groups, or individuals, are available either as a standard course listed on our website or as a custom class designed to your specific needs. Private instruction ranges from foundational shooting tutorials to advanced dynamic tactics in a one-on-one or group learning environment.

INTERNATIONAL CUSTOMERS

The SIG SAUER Academy has a diverse staff of expert, bilingual instructors that provide the highest level of training and instruction to international civilian and military/law enforcement customers.

SIG SAUER Academy staff have consistently trained with some of the world's most elite counterterrorism units, providing expert instruction across a wide range of training needs. Our staff and facilities can provide any level of instruction needed to international clients, and can provide all of the necessary equipment and materials, including all tactical equipment and firearms no matter what manufacturer or platform is required.

ABOUT OUR COURSES



PISTOL/RIFLE/SHOTGUN/PRECISION SCOPED RIFLE

The SIG SAUER Academy has programs that are designed to achieve results across a broad range of platforms, from pistols and rifles, to shotguns and precision long-range shooting. All courses are taught from a foundational level and have a progression structure allowing students to develop their skills at their own pace. Depending on your personal training objectives, we offer classes for personal and home defense, individual skill building, and instructor certification.



ADVANCED TRAINING

Advanced training courses are designed to take a student's skills to an extremely high level. These classes help provide students the knowledge, skills, and confidence to improve their performance and decision-making in a high-risk, high-stress environment. These courses include specific subjects such as low light pistol and rifle, advanced medical training, executive protection, as well as vehicle and scenario-based training.



ARMORER

SIG SAUER is one of the many major manufacturers that offers civilian armorer's courses. Our armorer's certification gives students a complete and thorough understanding of SIG SAUER firearms, proper maintenance techniques, and inspection processes. These courses are designed to provide all of the necessary information to preserve the firearms factory warranty. Students who successfully complete these courses receive a three year armorer certification.



LAW ENFORCEMENT/MILITARY

SIG SAUER Academy is dedicated to providing the highest level of global training for military and law enforcement professionals. Courses include specific subjects such as bus and vehicle assault, night vision, breaching, and direct threat care. Any course can be conducted remotely or customized to meet agency or department needs. Custom course design and implementation allow for any desired capability and duration of training. The SIG SAUER Academy also has physical fitness facilities available to visiting groups at no charge.

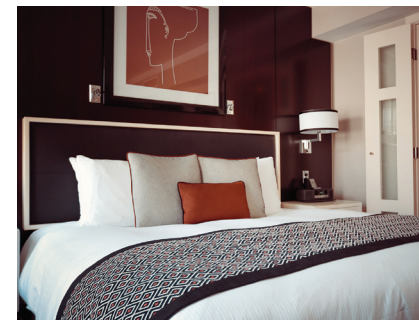
TRAINING

SIG SAUER ACADEMY

MORE THAN TRAINING. A DESTINATION. SIG SAUER ACADEMYSM is located in the Seacoast region of New Hampshire, just an hour north of Boston, and an hour south of Portland, Maine. New Hampshire is home to 18 miles of New England coastline and beaches, and is situated approximately an hour away from several top- rated ski resorts in the White Mountains. Nearby historic Portsmouth is a favorite tourist destination, featuring nationally-recognized restaurants and cuisine, outdoor sight-seeing activities, local boutiques, tax-free shopping, and a thriving nightlife. There are several major transportation hubs allowing easy access along with a wide variety of accommodations available nearby.

PRO SHOP

The SIG SAUER Academy Pro Shop is a full-service, factory-direct retail store open to the public, located on the grounds of the SIG SAUER Academy. The Pro Shop features the entire line of SIG SAUER pistols, rifles, electro-optics, suppressors, ammunition, airguns, accessories, and apparel and also has armorers services available on-site. The Pro Shop staff are highly trained and can provide expert advice on all of the latest SIG SAUER products.



ACCOMMODATIONS

Through partnership with SIG SAUER®, we offer special rate arrangements with local hotels in Exeter, Dover, and Portsmouth NH, all within 10-30 minutes of the Academy.



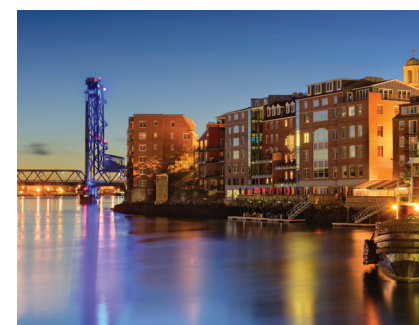
TRANSPORTATION

The SIG SAUER Academy is about 30 minutes east of Manchester, New Hampshire Airport (MHT), and about an hour north of Boston International Airport (BOS) in Massachusetts. Some SIG SAUER partner hotels also offer students free shuttle access to and from the Academy.



EXETER

Boasting tree-lined streets and a wealth of historical architecture, Exeter is a quick 10 minutes from the Academy and hosts three of our preferred hotels. With ample restaurants, shopping and night life, this picturesque river town is a convenient place to stay while training at the Academy and is roughly 10 miles inland from the coast.



PORTSMOUTH

Venture into downtown Portsmouth, where you'll find a steady mix of modern and historic flair. From cobblestone-lined streets and historic buildings, to waterfront dining and local breweries, Portsmouth is not to be missed while here.



Wir stehen Ihnen zur Verfügung:

SIG SAUER AG | Industrieplatz 1 | CH - 8212 Neuhausen am Rheinfall
+41 (52) 551 20 00 www.sigsauer.swiss info@sigsauer.swiss

SIG SAUER, Inc. • 72 Pease Boulevard • Newington, NH 03801 USA • +1 (603) 610-3000
An ISO 9001:2015 Certified Company. Manufacturing in the U.S.A.

All trademarks, service marks, trade names, trade dress, product names and logos appearing in this catalog are the property of their respective owners. No trademark or service mark appearing in this catalog may be used without the prior written consent of the owner.

sigsauer.com

MKT0478 REV03